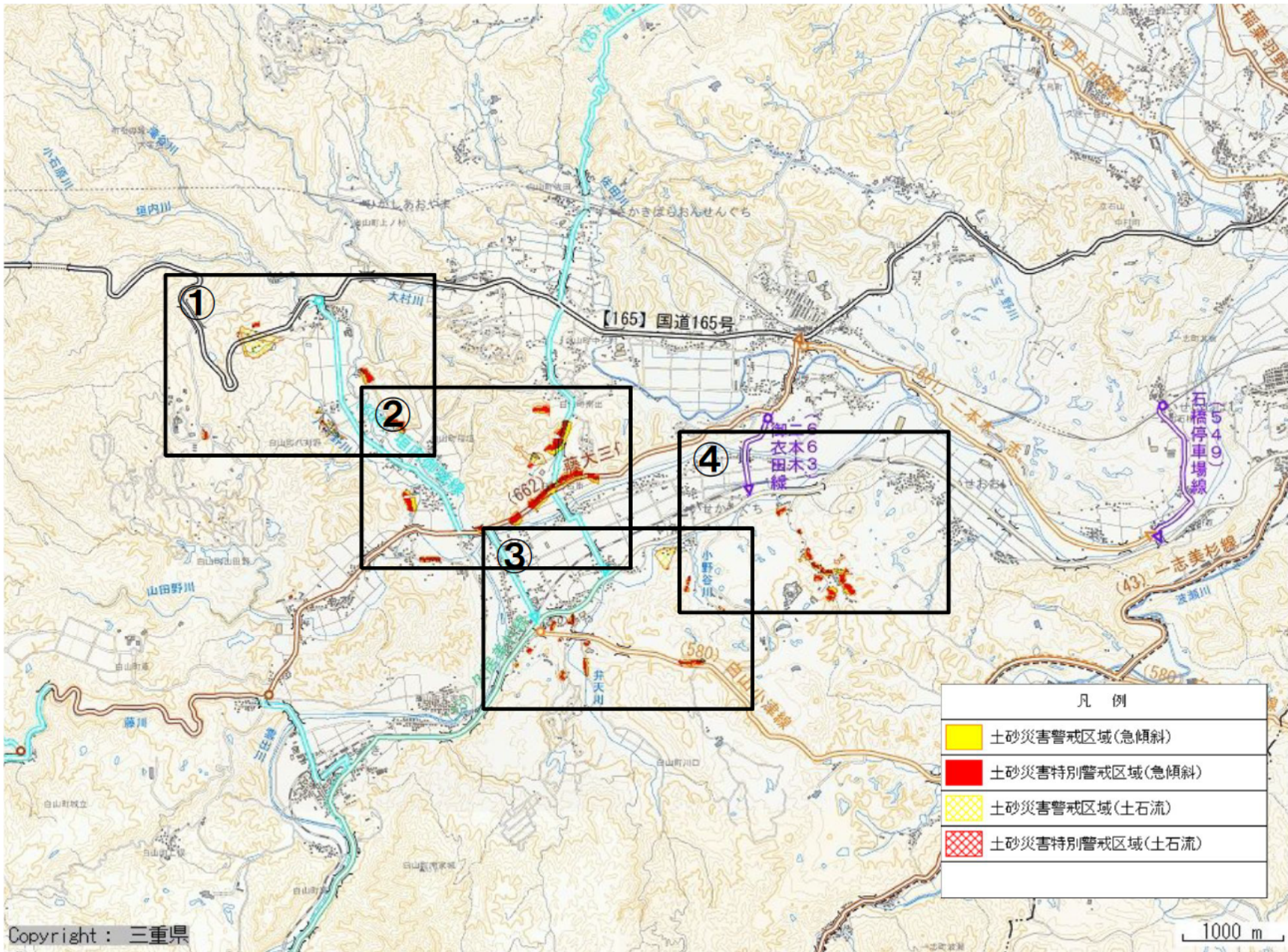






**津市白山町
(ハツ山・川口地区)**

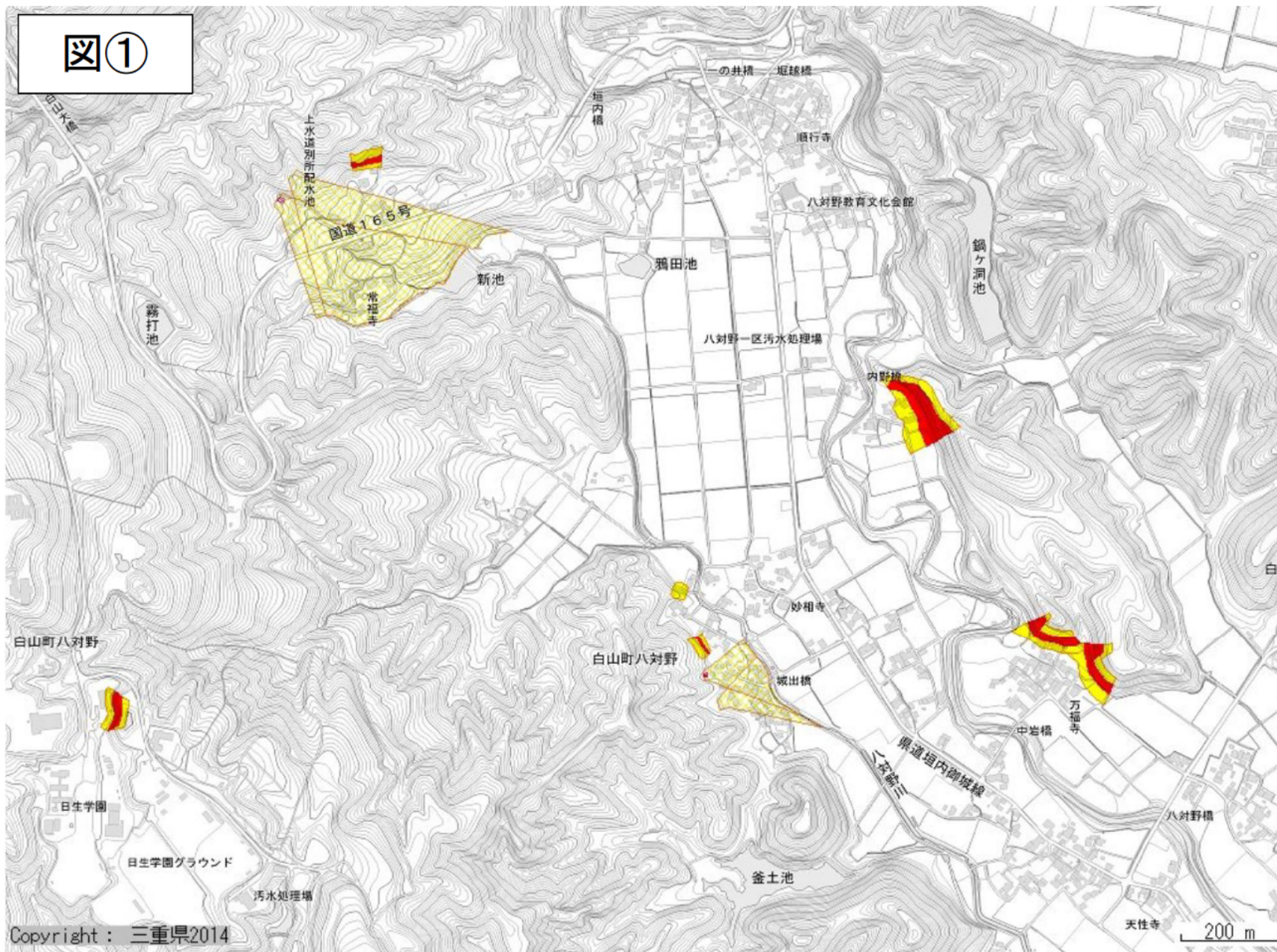


凡 例	
	土砂災害警戒区域(急傾斜)
	土砂災害特別警戒区域(急傾斜)
	土砂災害警戒区域(土石流)
	土砂災害特別警戒区域(土石流)

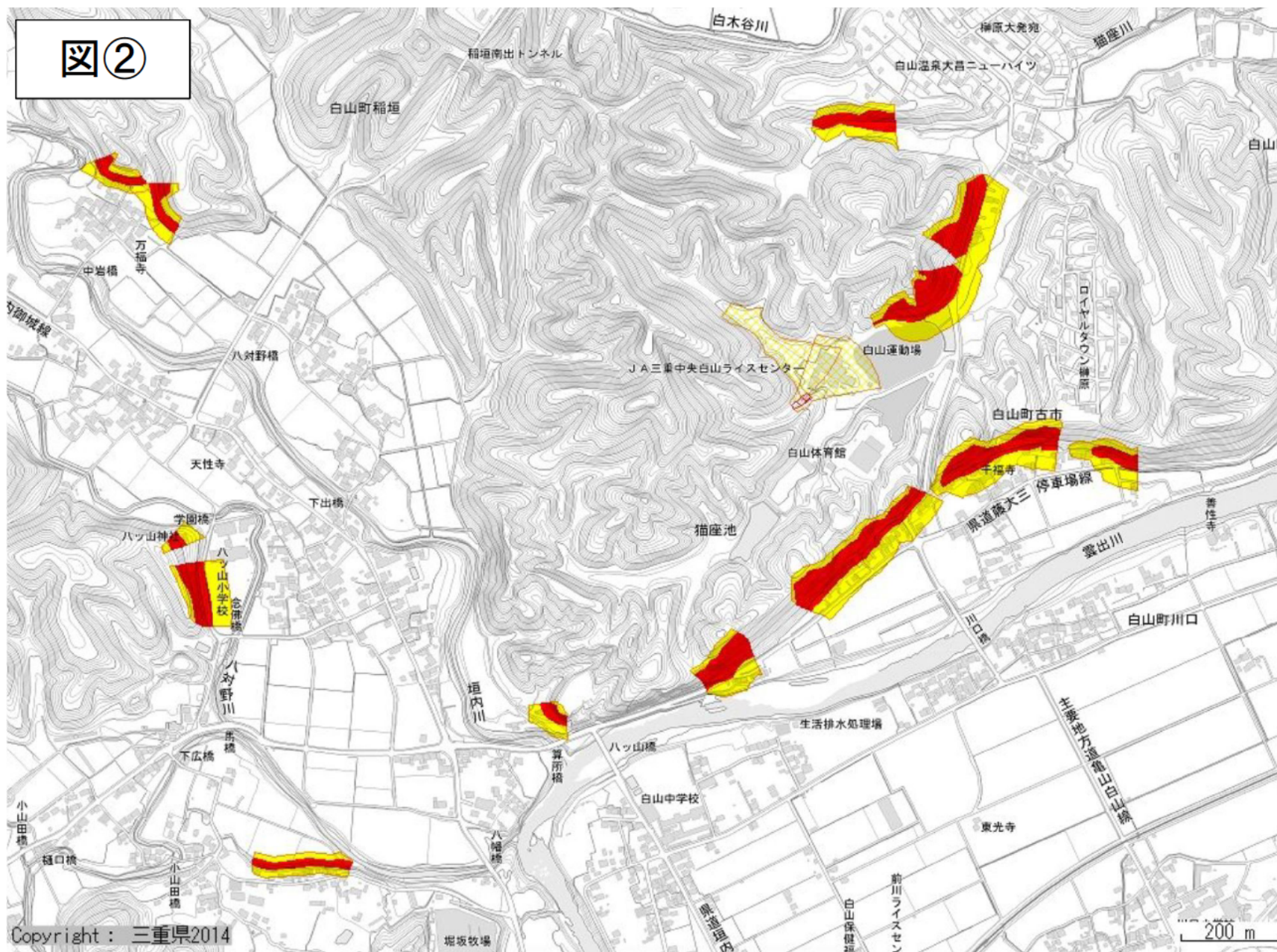
Copyright: 三重県

1000 m

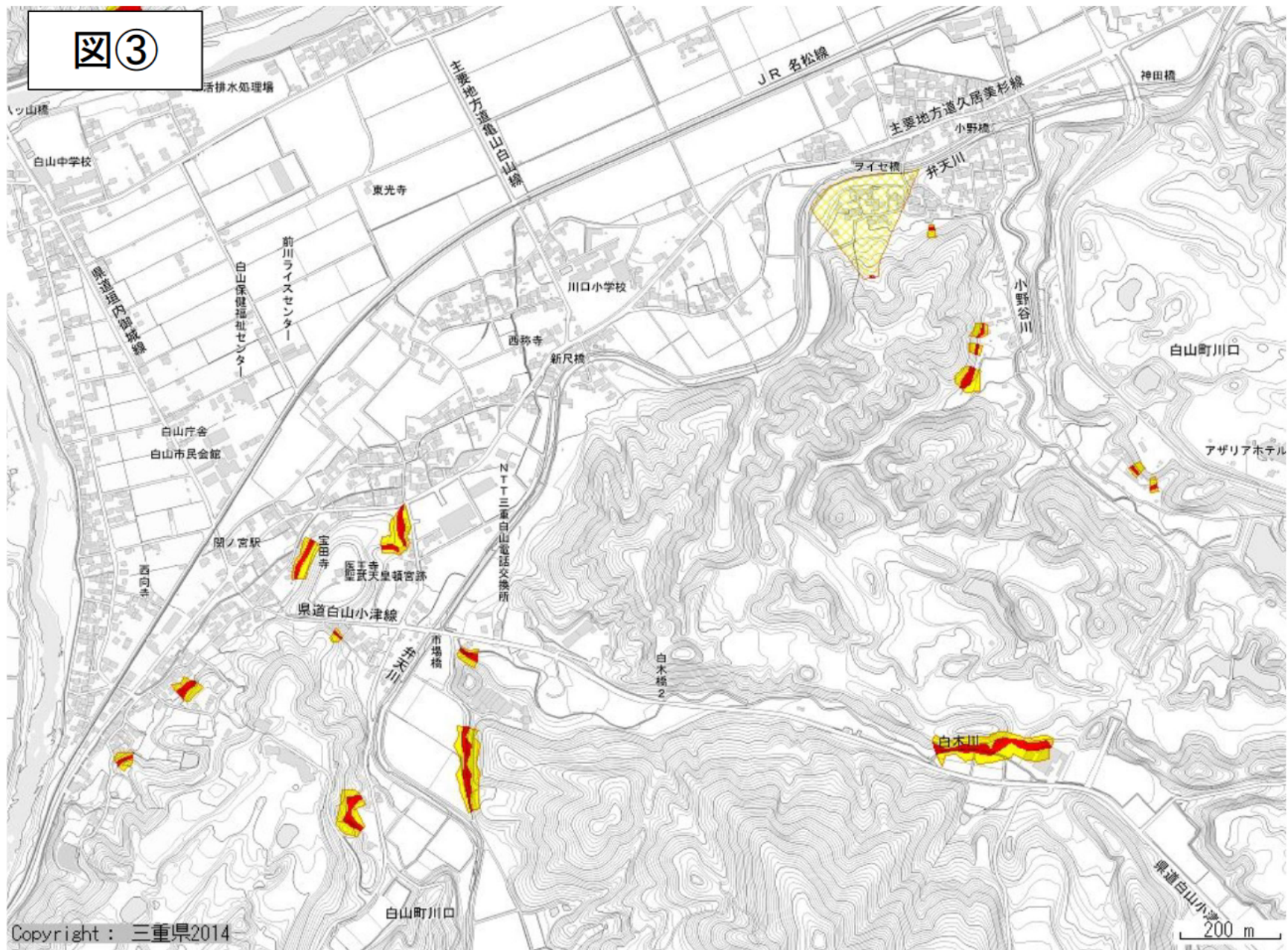
図①



図②



図③



図④

