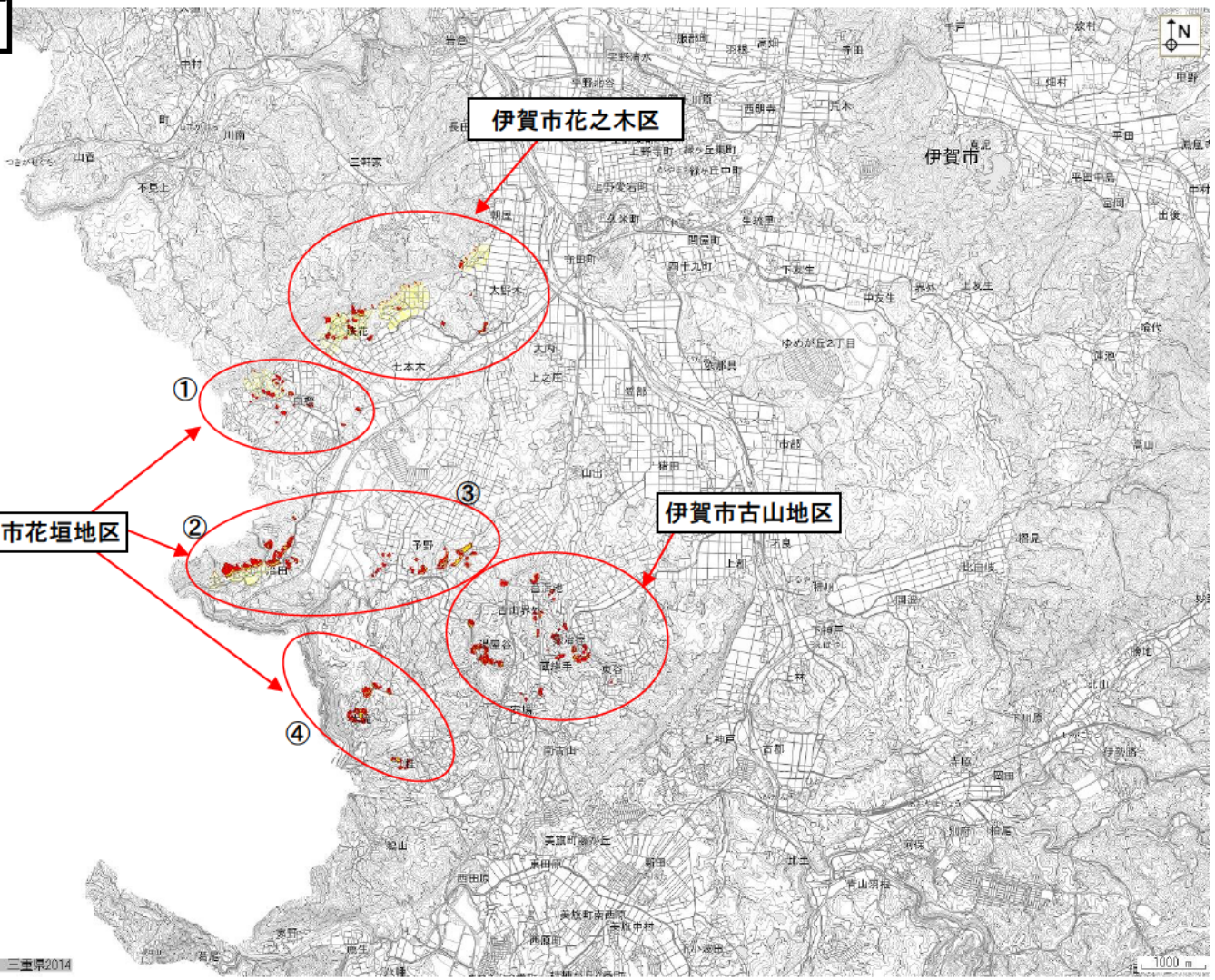
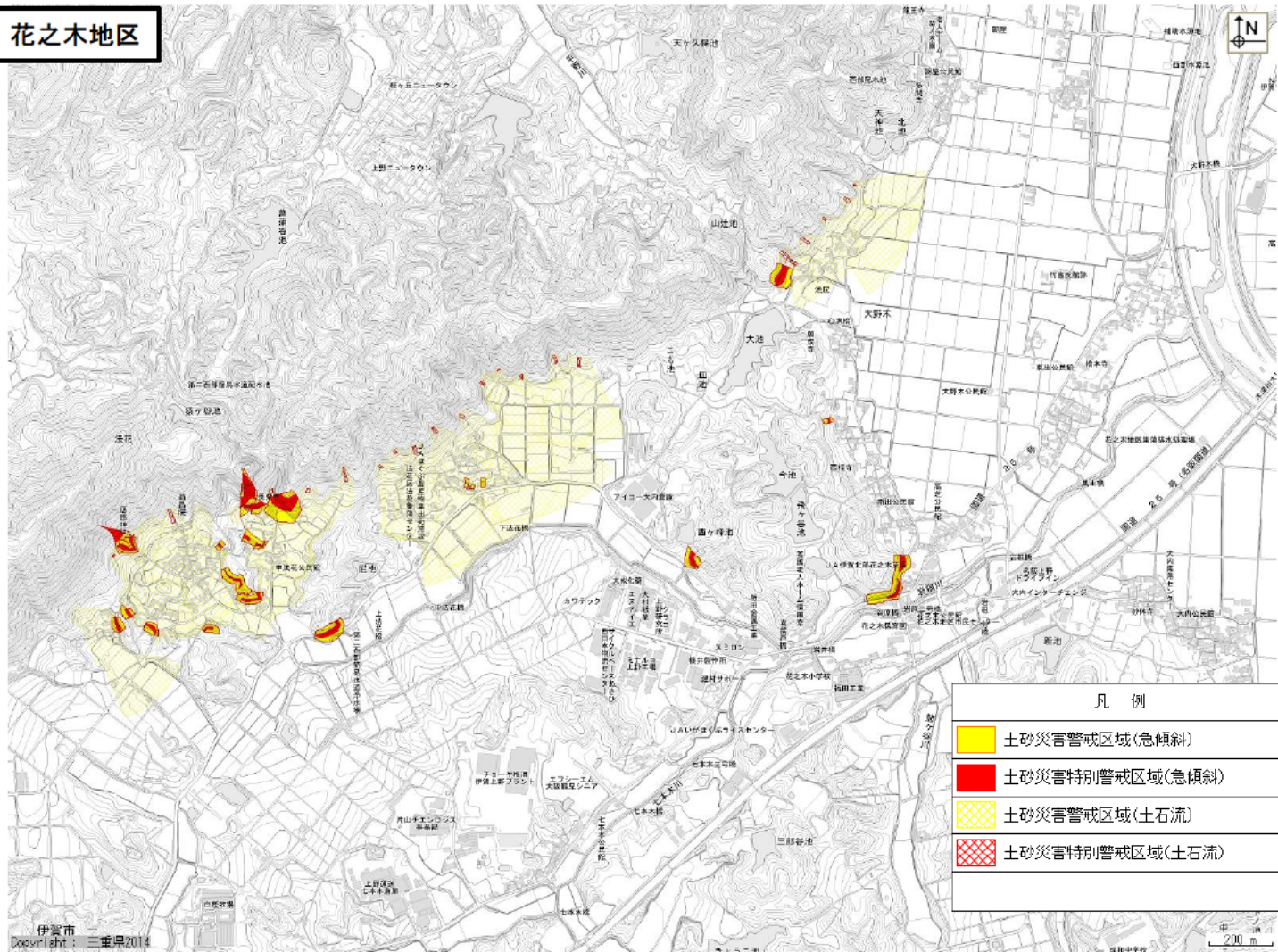

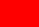




広域

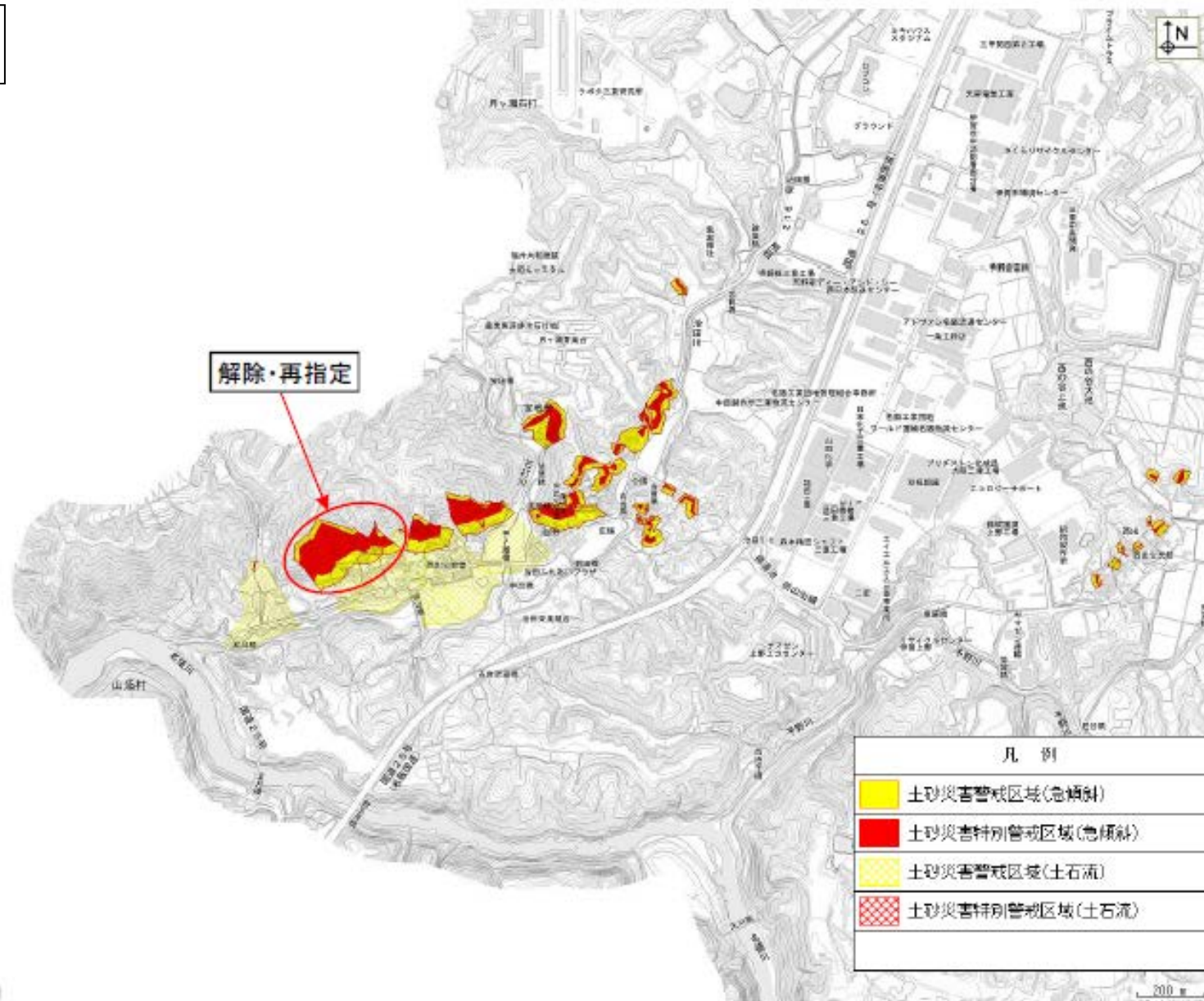


花之木地区

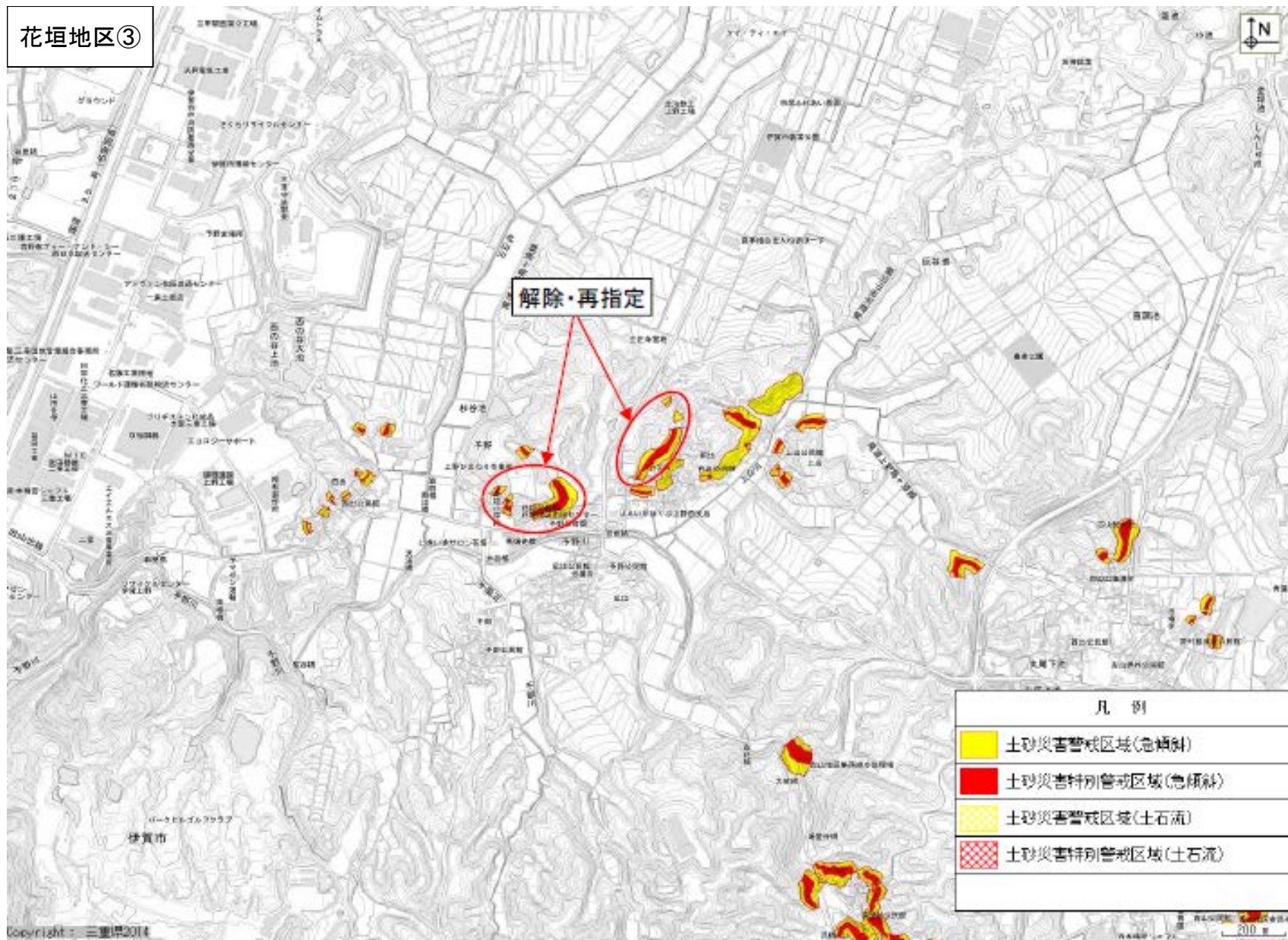


凡例	
	土砂災害警戒区域(急傾斜)
	土砂災害特別警戒区域(急傾斜)
	土砂災害警戒区域(土石流)
	土砂災害特別警戒区域(土石流)





花垣地区②

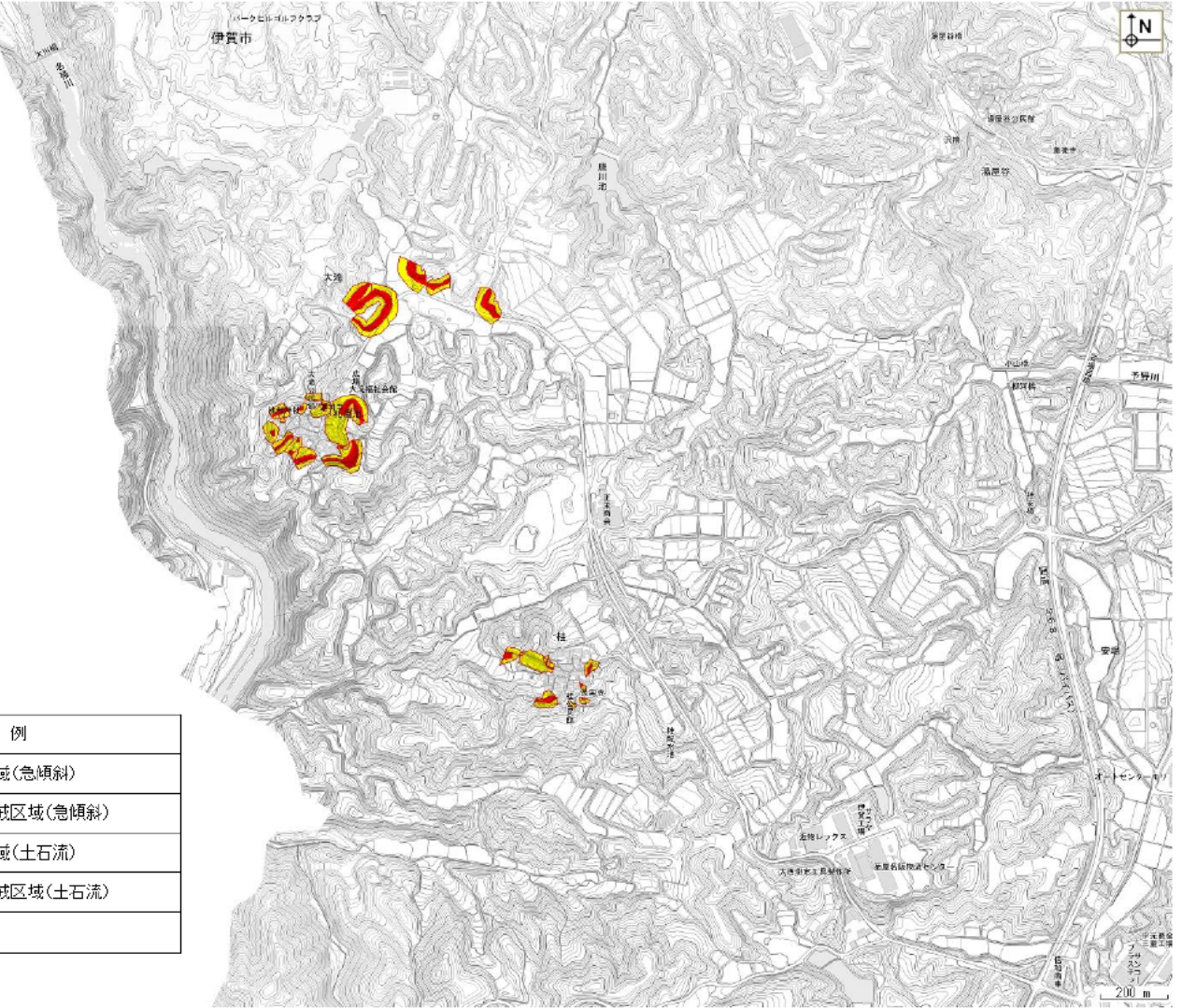


花垣地区③

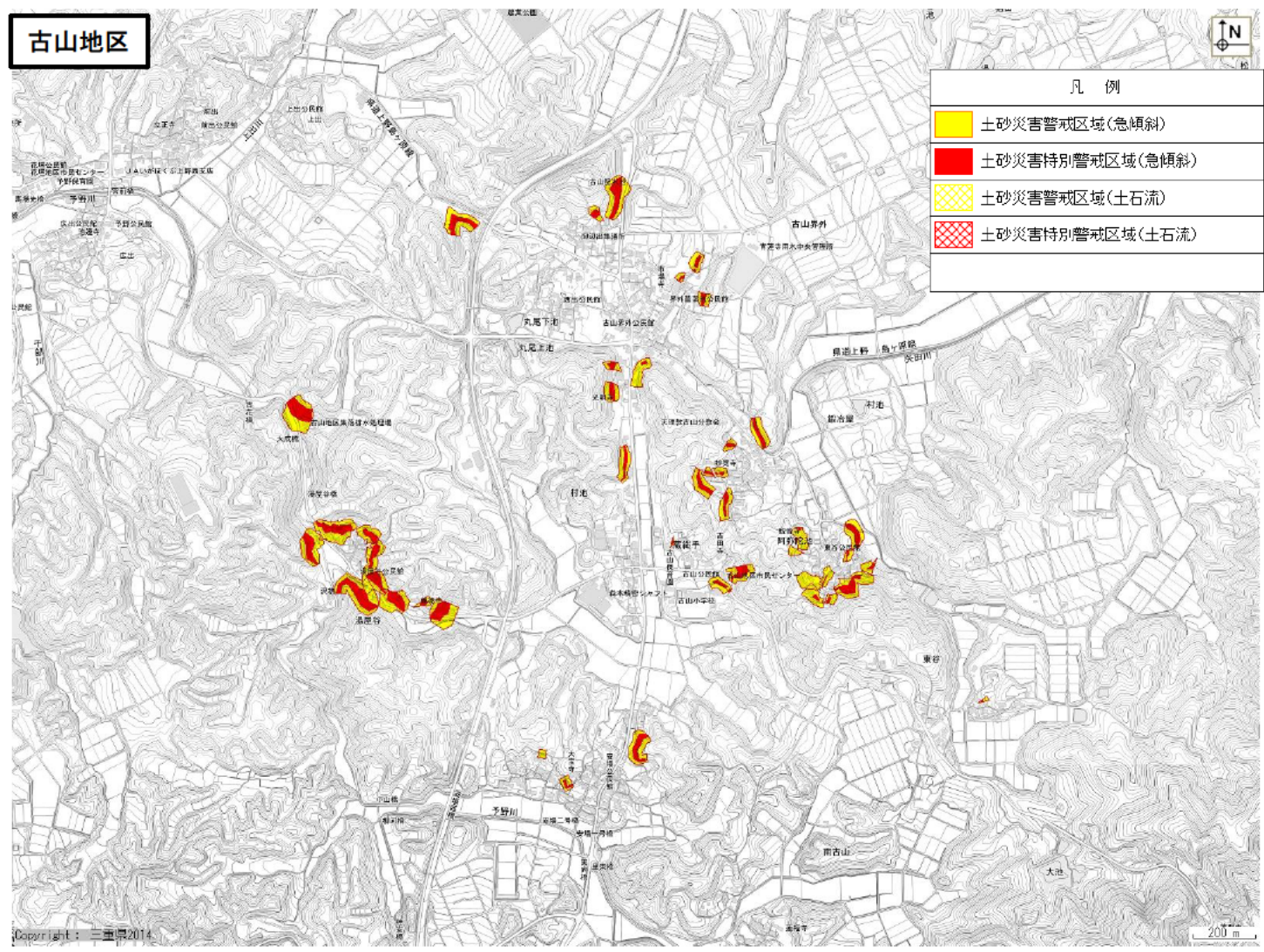


花垣地区④

凡 例	
	土砂災害警戒区域(急傾斜)
	土砂災害特別警戒区域(急傾斜)
	土砂災害警戒区域(土石流)
	土砂災害特別警戒区域(土石流)



古山地区



凡 例	
	土砂災害警戒区域(急傾斜)
	土砂災害特別警戒区域(急傾斜)
	土砂災害警戒区域(土石流)
	土砂災害特別警戒区域(土石流)