



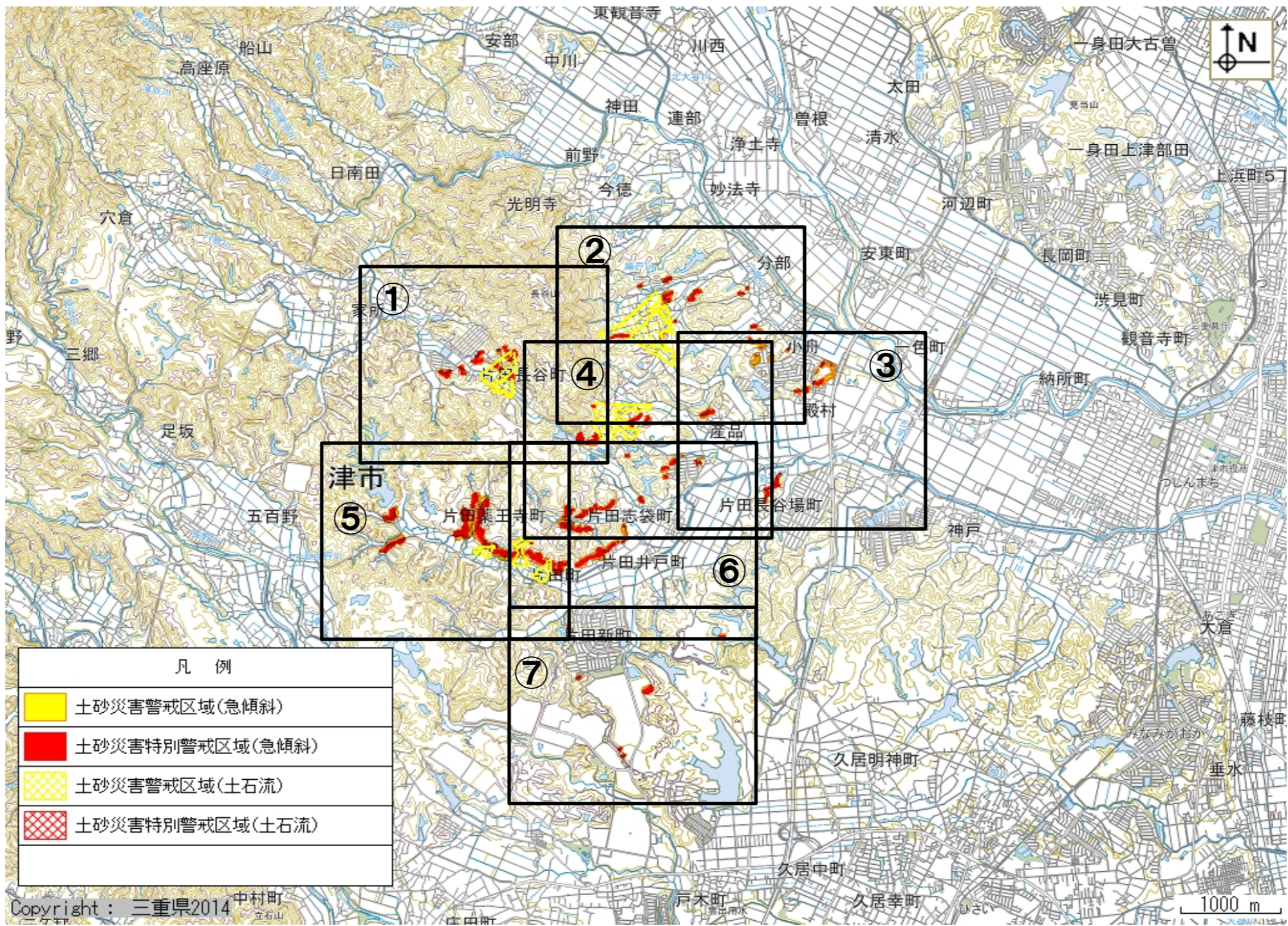


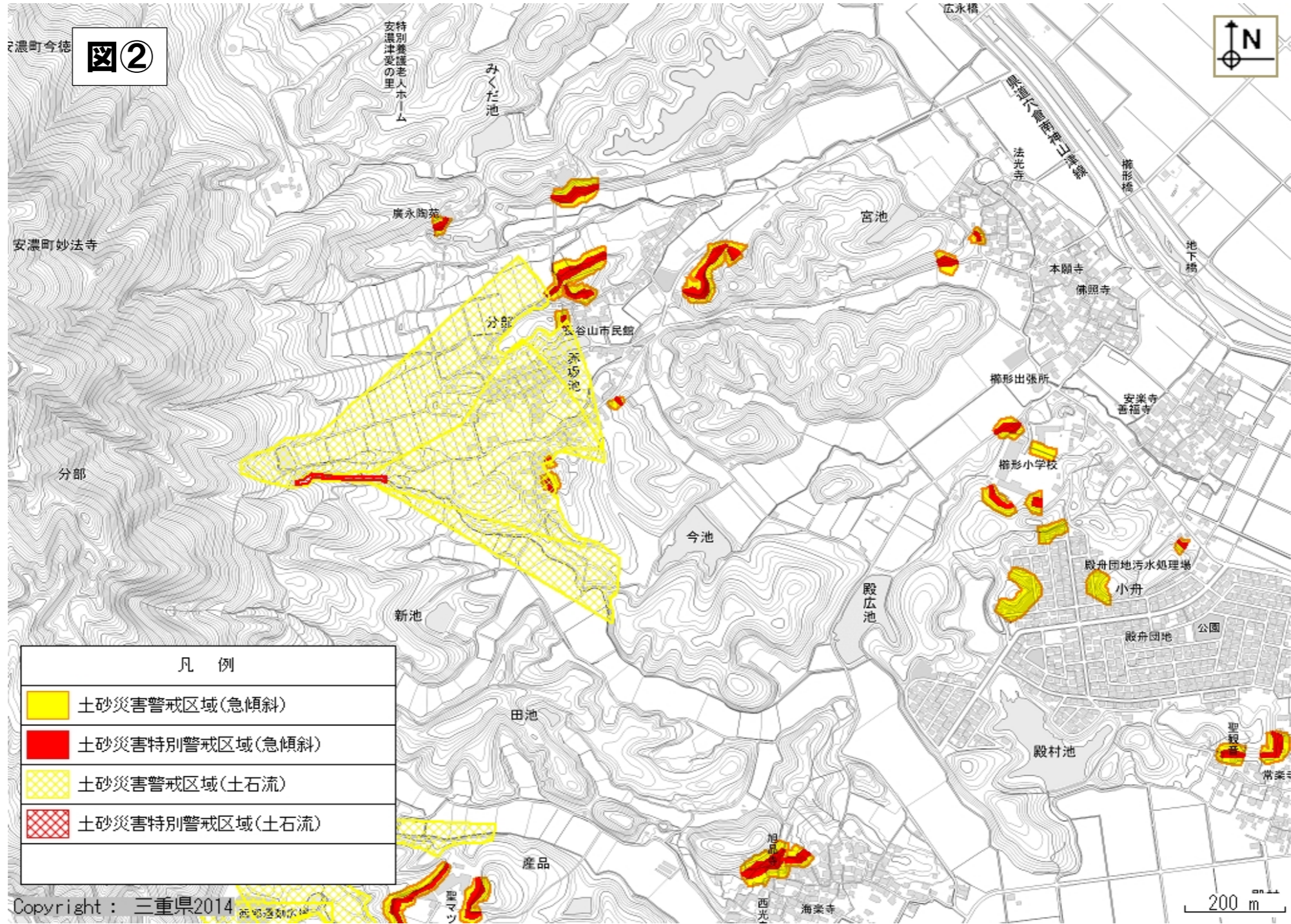
凡 例	
	土砂災害警戒区域(急傾斜)
	土砂災害特別警戒区域(急傾斜)
	土砂災害警戒区域(土石流)
	土砂災害特別警戒区域(土石流)

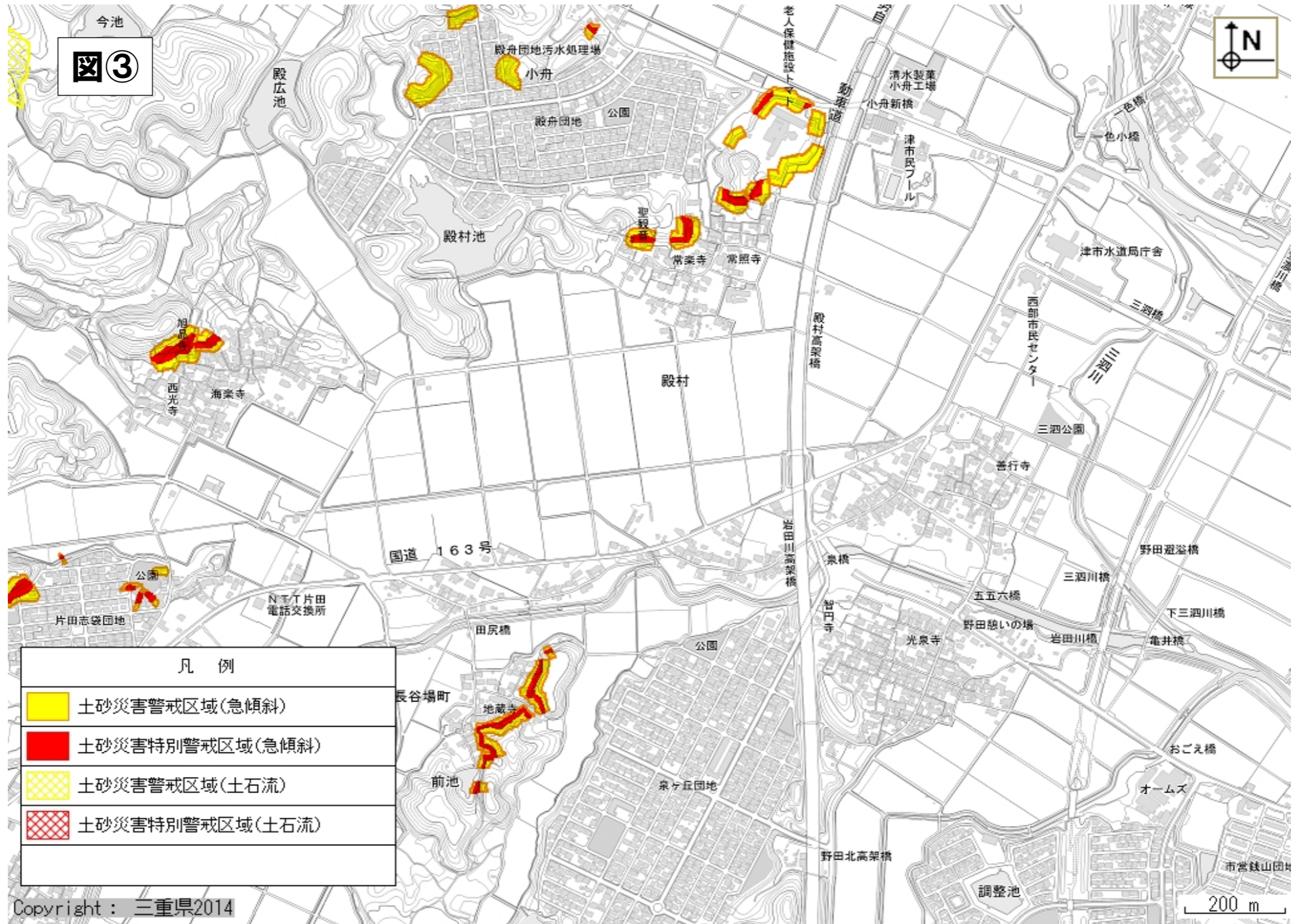
津市 (楡形地区、片田地区)

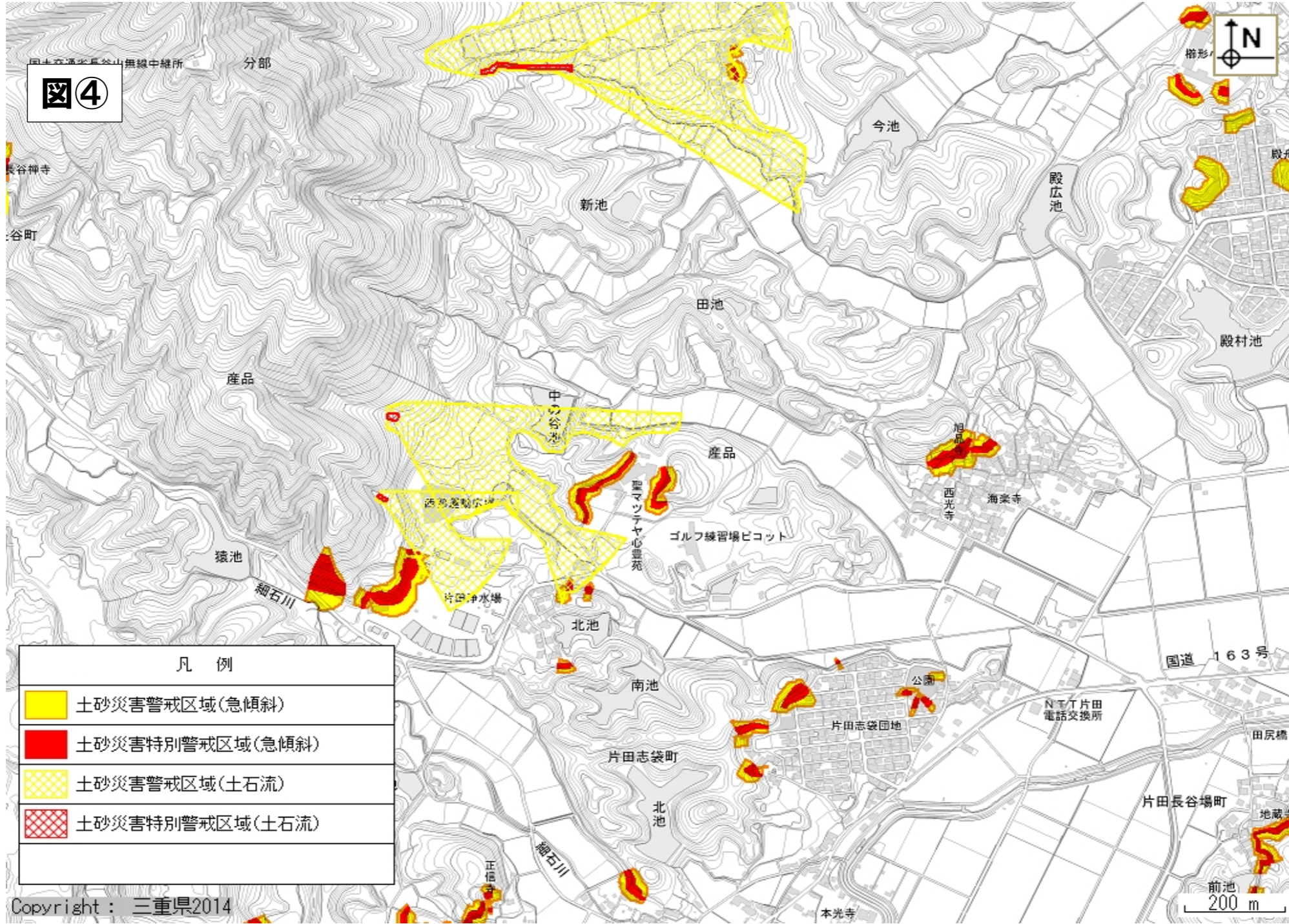


凡 例

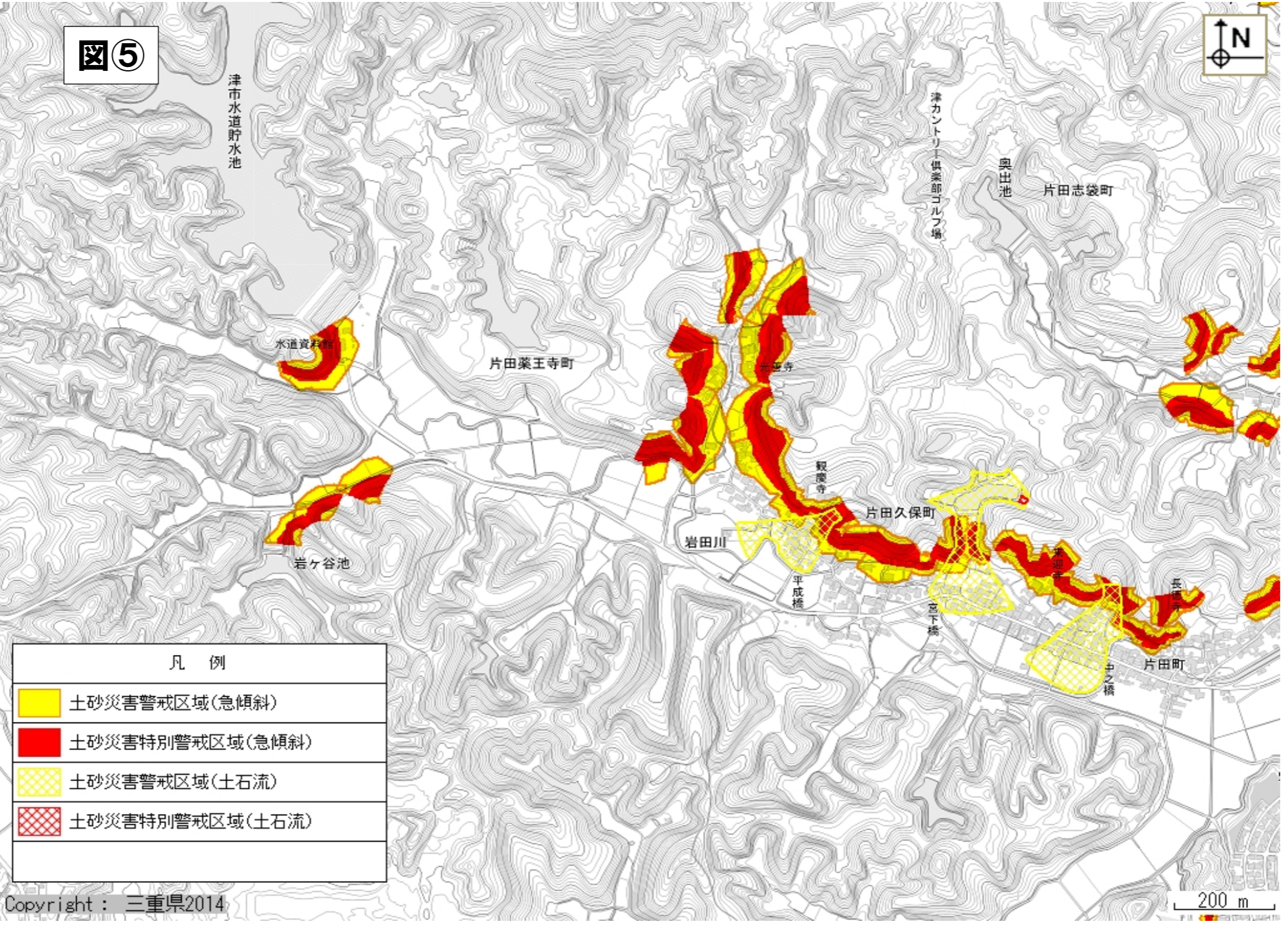
- 土砂災害警戒区域(急傾斜)
- 土砂災害特別警戒区域(急傾斜)
- 土砂災害警戒区域(土石流)
- 土砂災害特別警戒区域(土石流)











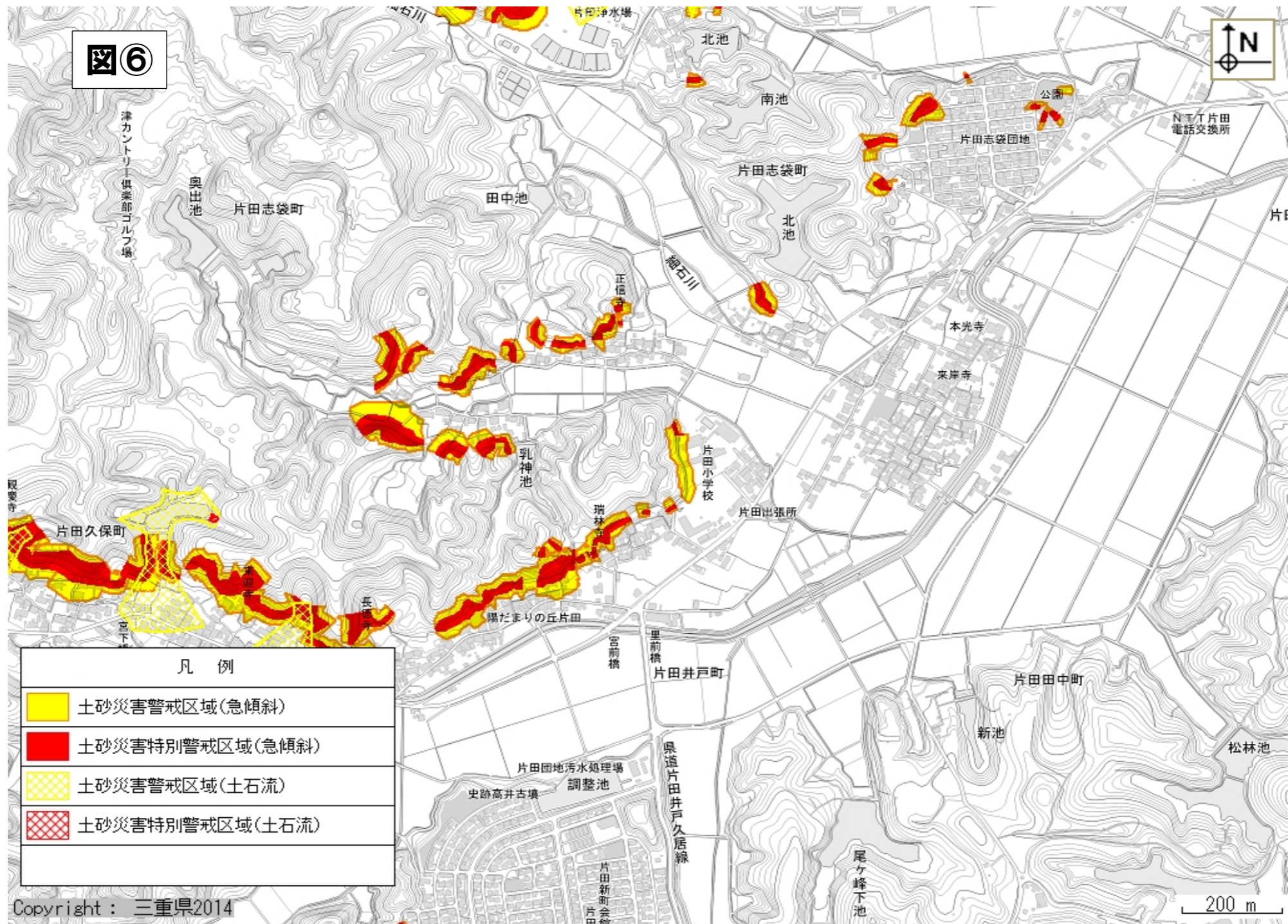
図⑤



凡 例	
	土砂災害警戒区域(急傾斜)
	土砂災害特別警戒区域(急傾斜)
	土砂災害警戒区域(土石流)
	土砂災害特別警戒区域(土石流)

Copyright: 三重県2014

200 m

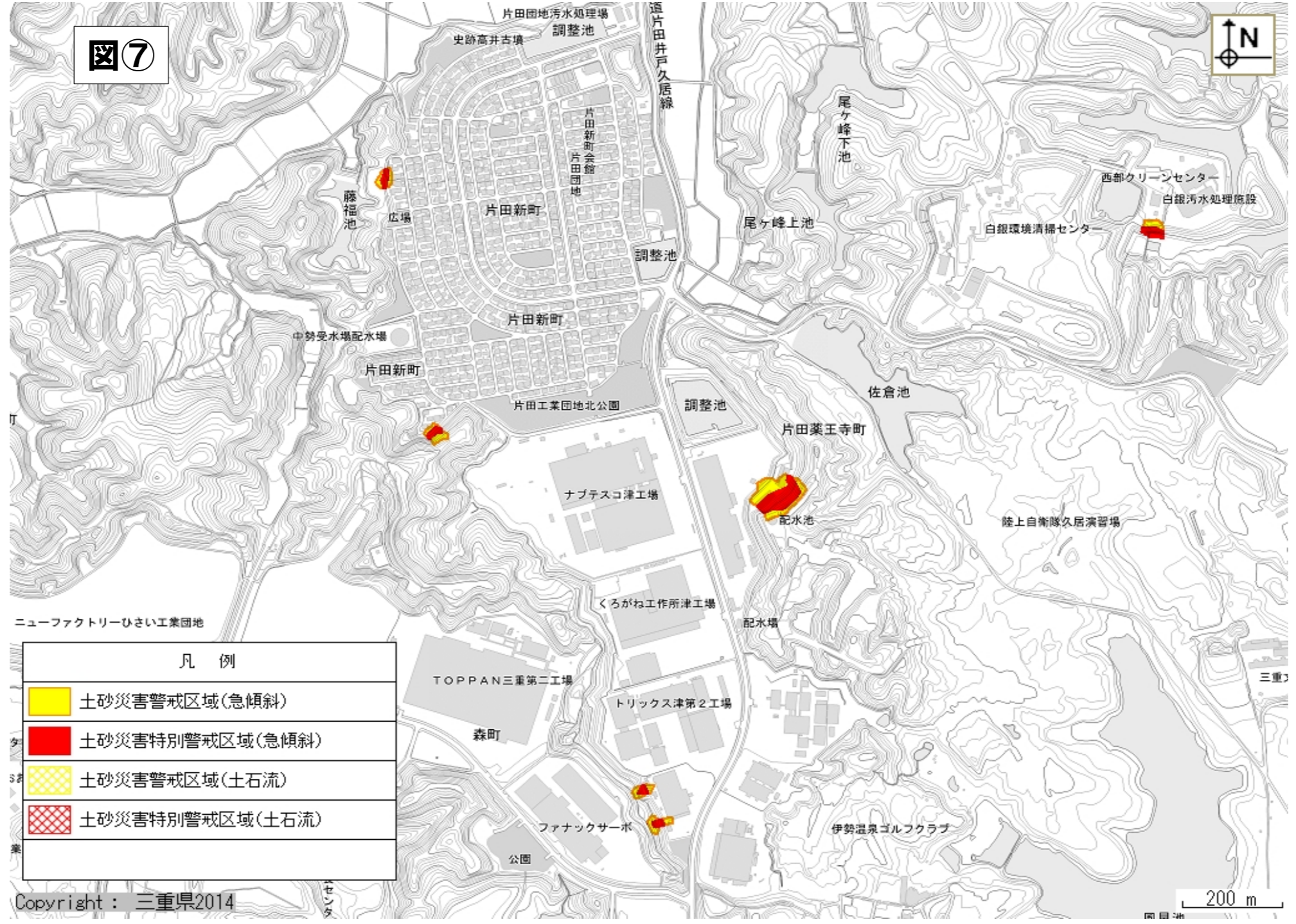






図⑥



200 m

図7



凡 例	
	土砂災害警戒区域(急傾斜)
	土砂災害特別警戒区域(急傾斜)
	土砂災害警戒区域(土石流)
	土砂災害特別警戒区域(土石流)