



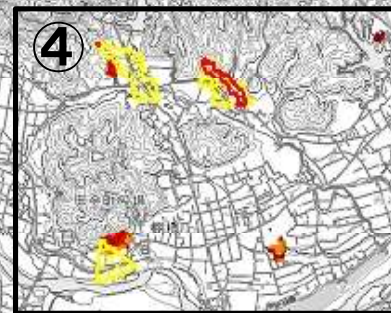
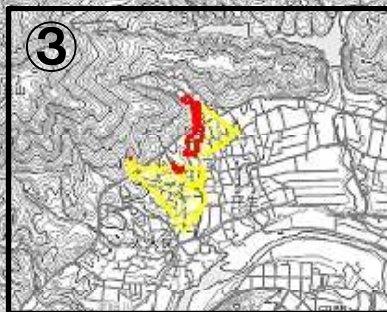
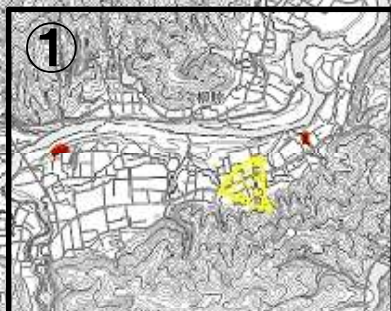






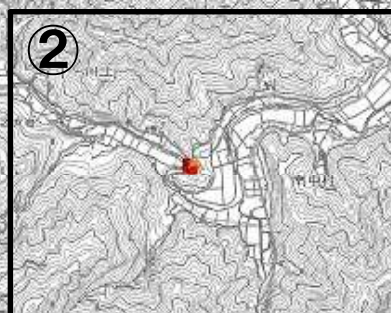
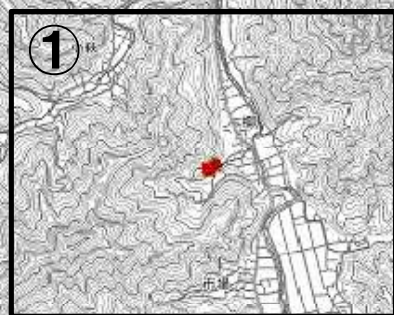
凡例	
	土砂災害警戒区域(急傾斜)
	土砂災害特別警戒区域(急傾斜)
	土砂災害警戒区域(土石流)
	土砂災害特別警戒区域(土石流)

地区1(度会町田口、長原、鮎川、立岡、大久保、平生、棚橋、大野木)







凡例	
	土砂災害警戒区域(急傾斜)
	土砂災害特別警戒区域(急傾斜)
	土砂災害警戒区域(土石流)
	土砂災害特別警戒区域(土石流)

地区2(度会町柳、川上、南中村)



凡 例

- | | |
|---|-----------------|
|  | 土砂災害警戒区域(急傾斜) |
|  | 土砂災害特別警戒区域(急傾斜) |
|  | 土砂災害警戒区域(土石流) |
|  | 土砂災害特別警戒区域(土石流) |

図①

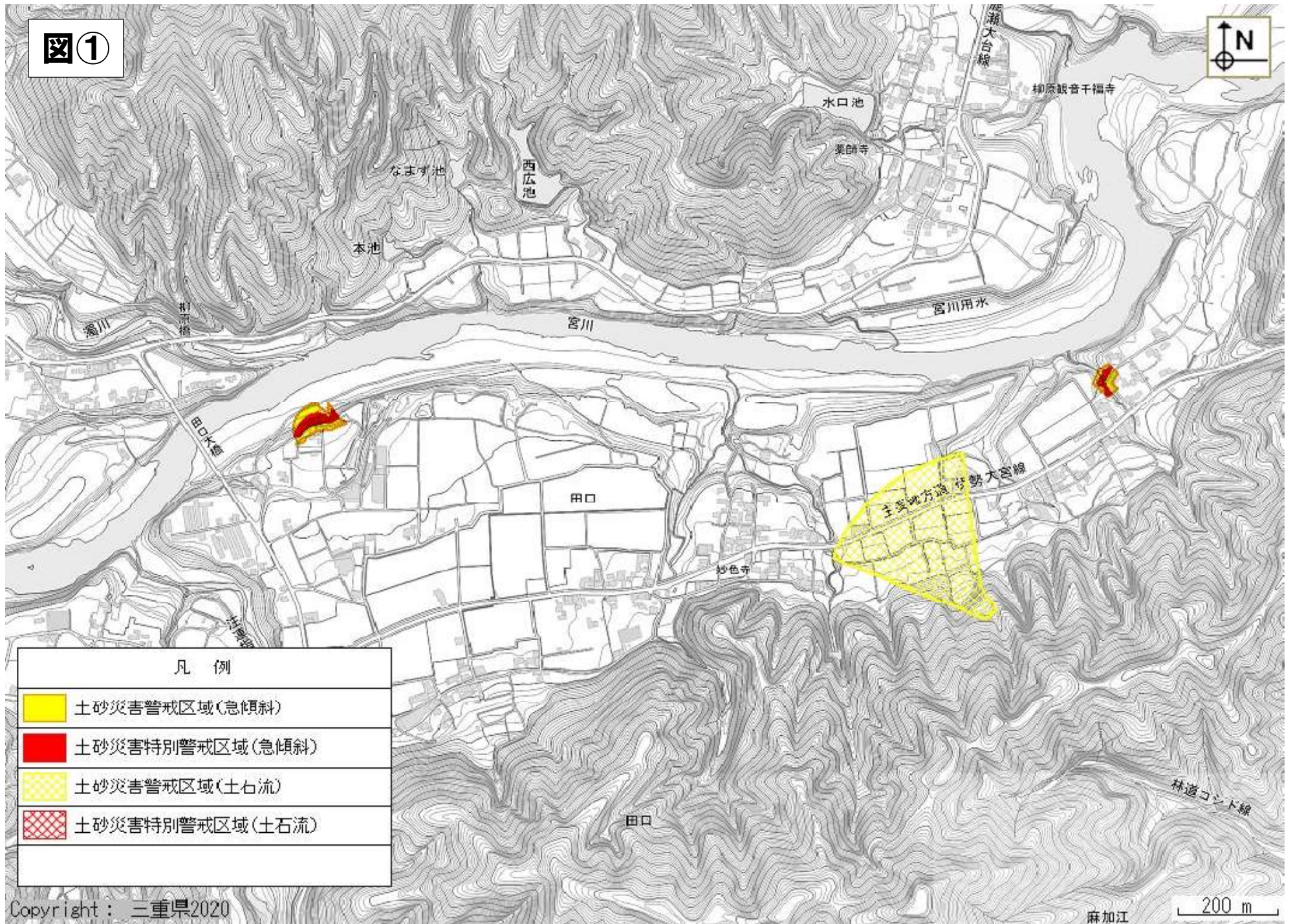
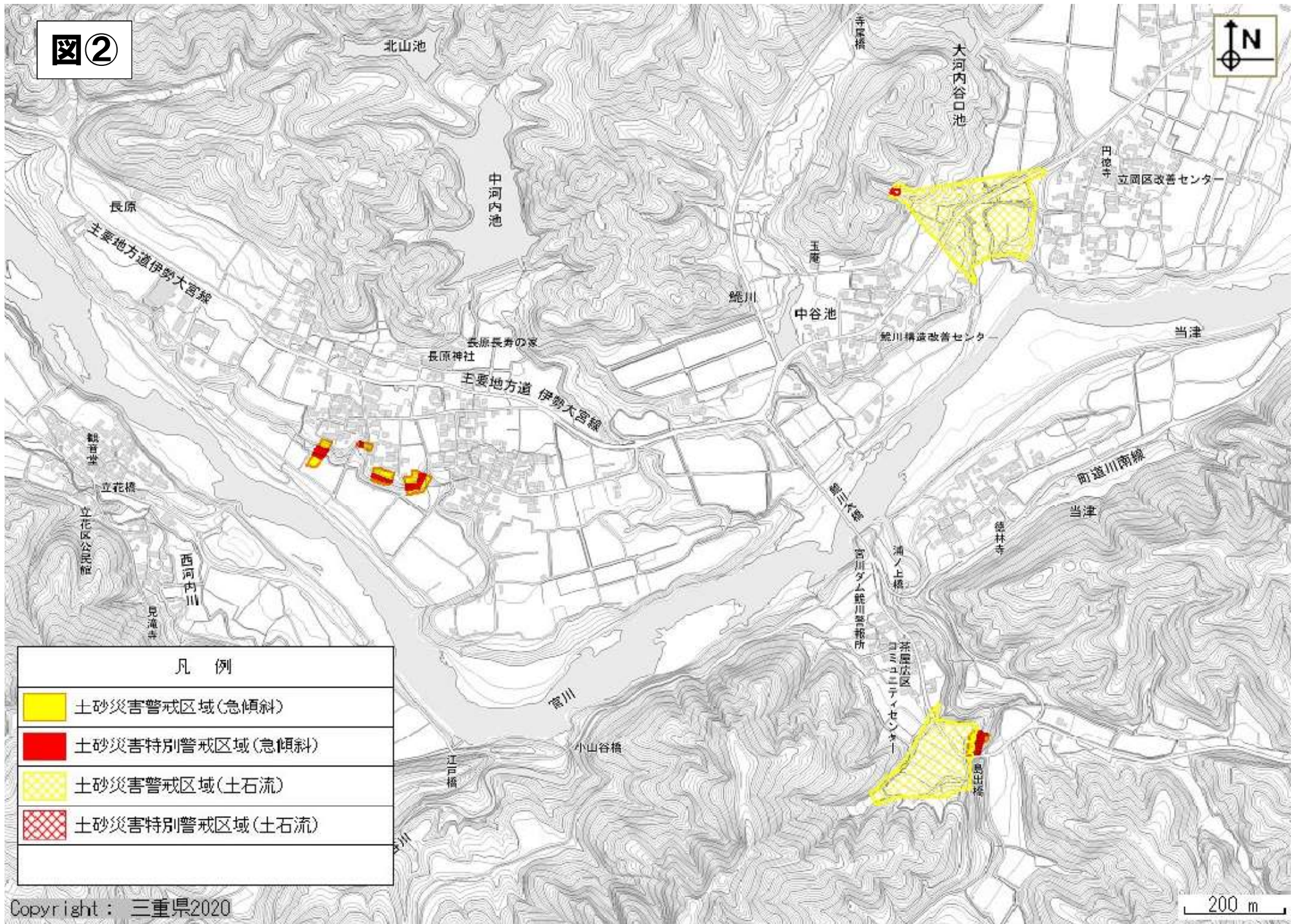
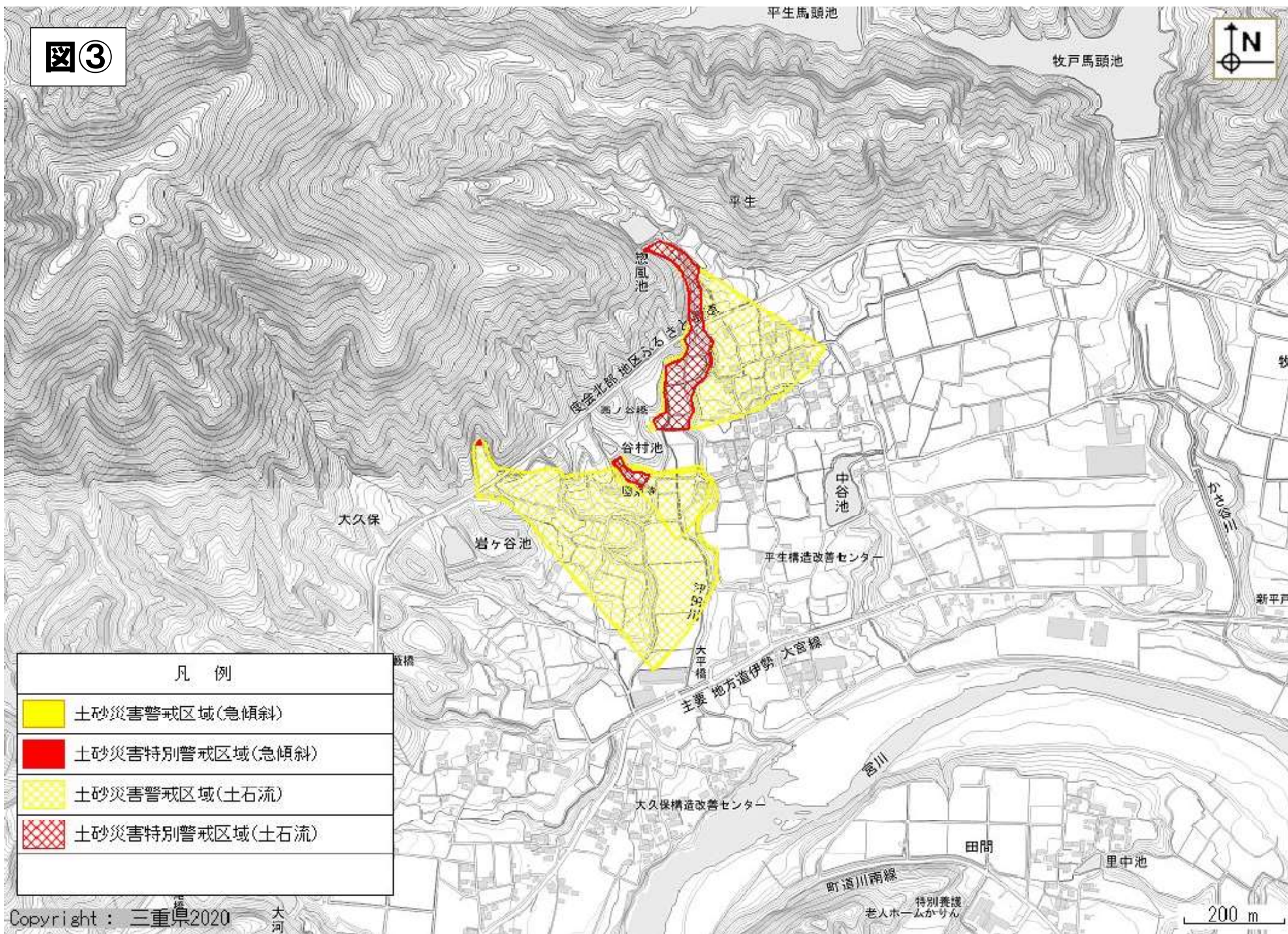


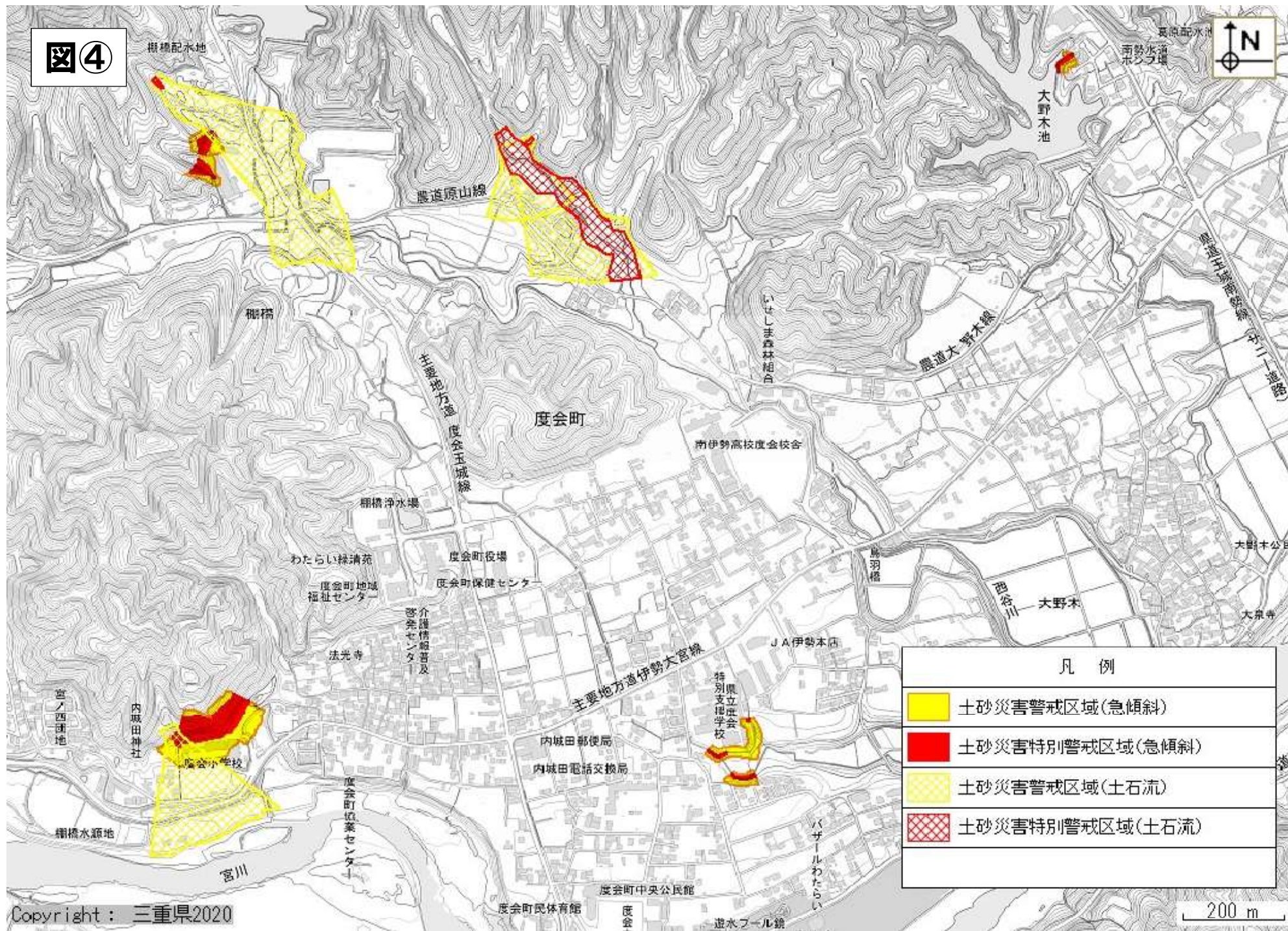
図2







図③

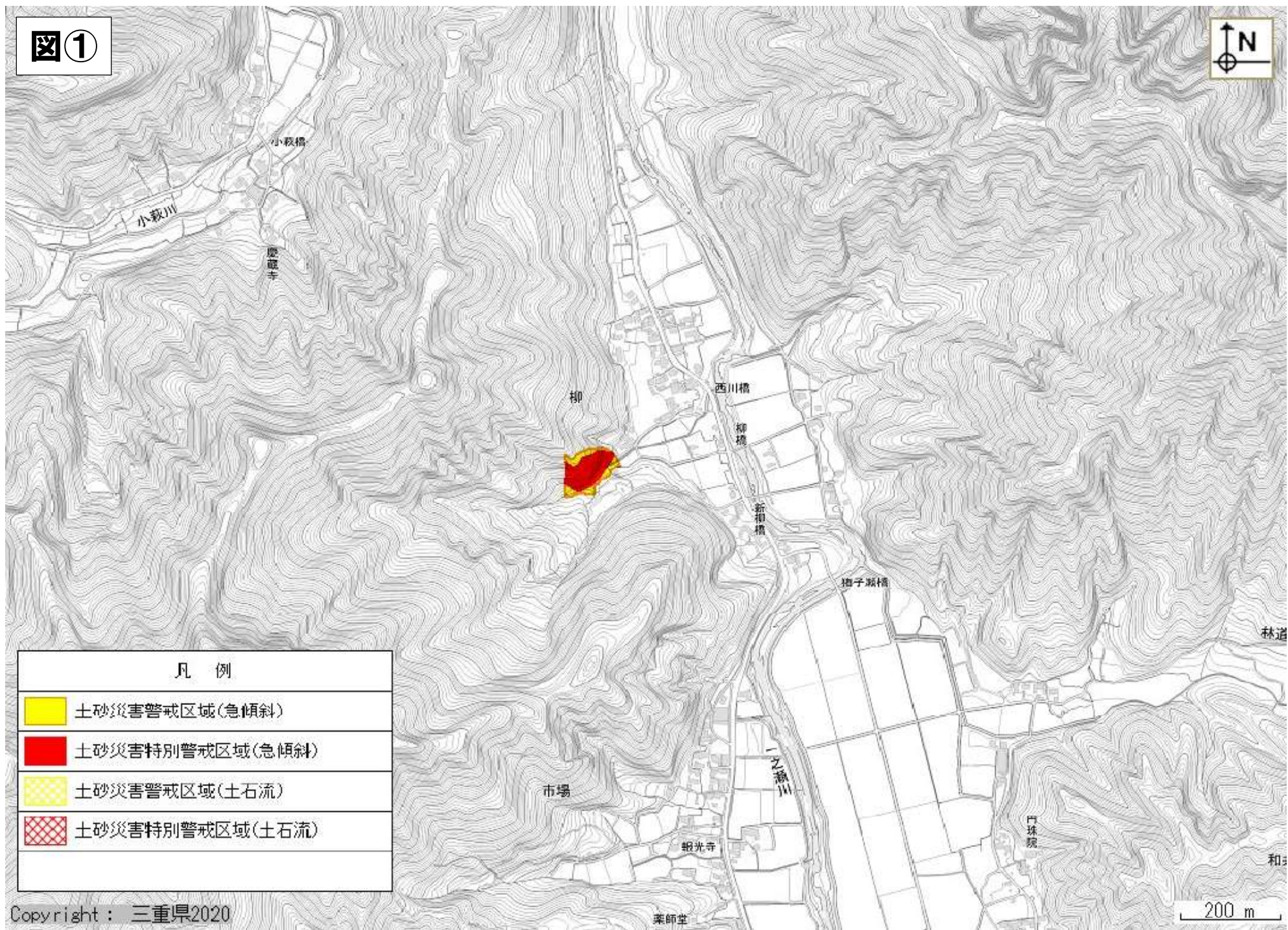


④

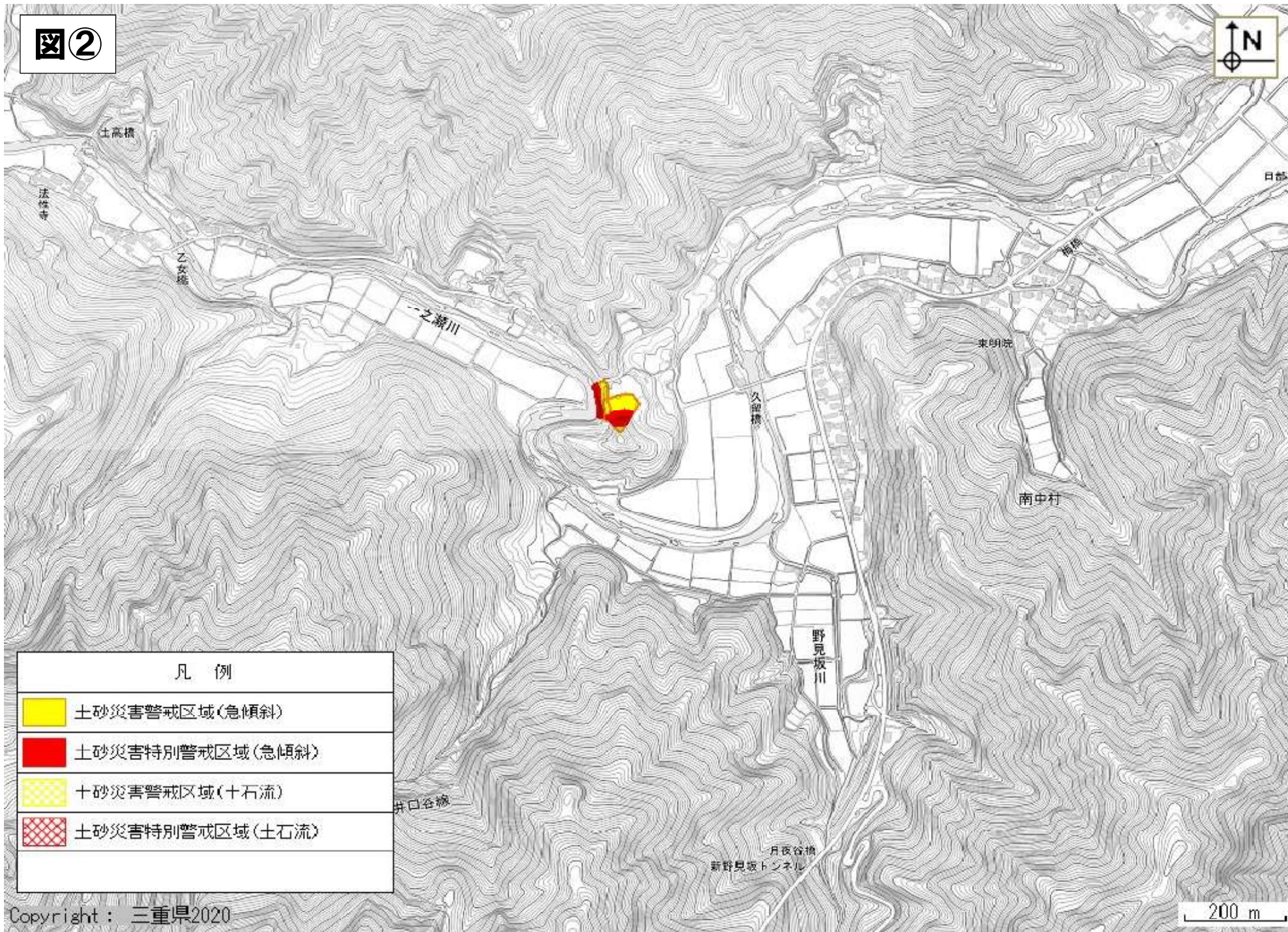
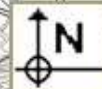


凡 例	
	土砂災害警戒区域(急傾斜)
	土砂災害特別警戒区域(急傾斜)
	土砂災害警戒区域(土石流)
	土砂災害特別警戒区域(土石流)





図①



図②



凡 例

	土砂災害警戒区域(急傾斜)
	土砂災害特別警戒区域(急傾斜)
	土砂災害警戒区域(土石流)
	土砂災害特別警戒区域(土石流)