

# **Invest in Mie**

## **Why Mie?**

# Why Mie?

## 5 reasons to invest in Mie

Located in the center of Japan, Mie prefecture, historically well-known for hosting the country's most prominent shrine, is today a thriving hub of industry and innovation. Five reasons make Mie an ideal place to invest.



## Reason 1 Industrial Structure

Mie has strong manufacturing industries.

Shipment value of manufactured goods			
	Electronic Equipment and Parts	Rubber Products	Transport Equipment
1	<b>MIE</b>	AICHI	AICHI
2	NAGANO	<b>MIE</b>	SHIZUOKA
3	YAMAGATA	FUKUOKA	KANAGAWA
4	MIYAGI	TOCHIGI	GUNMA
5	HIROSHIMA	FUKUSHIMA	FUKUOKA
6	KYOTO	SHIZUOKA	HIROSHIMA
7	FUKUSHIMA	YAMAGUCHI	<b>MIE</b>
8	IWATE	SHIGA	SAITAMA
9	OSAKA	OSAKA	TOKYO
10	AKITA	SAITAMA	OSAKA

Shipment value of manufactured goods per capita	
Prefecture	Shipment Value Per Capita (In Thousands of Yen)
<b>MIE</b>	6,469
SHIGA	5,702
YAMAGUCHI	5,439

Mie ranked 1st in shipment value of manufactured goods per capita in 2022.

(Source: Compiled from statistics data of Ministry of Economy, Trade and Industry,)

## Potential Business Partners

Automotive	Electronics	Petrochemical
BorgWarner Morse Systems Japan K.K.	ASML Japan Co., Ltd.	Asahi KASEI Corp.
DENSO CORPORATION	DAIHEN Corporation	BASF Japan Ltd.
EXEDY CORPORATION	Entegris Japan Co., Ltd.	Cosmo Oil Co., Ltd.
Gestamp Hotstamping Japan Co., Ltd.	KIOXIA Corporation	DAI-ICHI KOGYO SEIYAKU Co., Ltd.
Honda Auto Body Co., Ltd.	KYOCERA Corporation	DIC Corporation
Honda Motor Co., Ltd.	Murata Manufacturing Co., Ltd.	JSR Corporation
Schlemmer Japan Co., Ltd.	NITTO DENKO CORPORATION	MITSUBISHI Chemical Corporation
Sumitomo Wiring Systems, Ltd.	Panasonic Corporation	Nippon Aerosil Co., Ltd.
TOYOTA AUTO BODY CO., LTD.	Sharp Display Technology Corporation	Promat Japan Corp.
The Yokohama Rubber Co., Ltd.	United Semiconductor Japan Co., Ltd.	SHOWA YOKKAICHI SEKIYU CO., LTD.
Yutaka Giken Company Limited.	Western Digital Corporation	Tosoh Corporation

(In alphabetical order)

## Reason 2 Subsidies

In 2016, as a part of Mie's greater goal of expanding industry in the prefecture, the prefectural government revised its investment incentive system to better address the diverse needs of firms looking to establish a presence or expand operations in Mie. The revised investment incentive system significantly alleviates the financial burden that foreign firms face as they embark on new projects or expand existing operations in the prefecture.

### ■ Subsidies for foreign affiliated firms

Investment Requirement	Minimum 500 million yen
Employment Requirement	Minimum 10 full-time employees
Subsidy Rate	20% (Up to 500 million yen)

\*Subsidy Rate for reinvestment by firms within the prefecture is 10%. For more information please contact us.

### ■ Rental fee for office

Investment Requirement	· Foreign capital : Minimum 50% · Office size: Minimum 15m <sup>2</sup>
Employment Requirement	Minimum 1 full-time employee
Subsidy Rate	50% of the annual rental fee (Up to 5 million yen per year for 3 years)

## Reason 3 One-stop service

The prefecture's one-stop service simplifies the process of researching, planning and starting new projects. The prefectural government offers full support. We will ensure your company's long-term success in Mie.

◆ TEL : + 8 1 - 5 9 - 2 2 4 - 2 6 6 8

◆ FAX : + 8 1 - 5 9 - 2 2 4 - 2 2 2 1

◆ Email : kigyoyu@pref.mie.lg.jp

### Message from the Governor

Welcome to Mie! Mie is a hub for industry and innovation: powerful petrochemical complexes, advanced research facilities as well as thriving automobile, semiconductor and liquid crystal sectors. Mie offers unique opportunities for foreign affiliated firms to expand their business.



Katsuyuki Ichimi  
Governor of Mie Prefecture

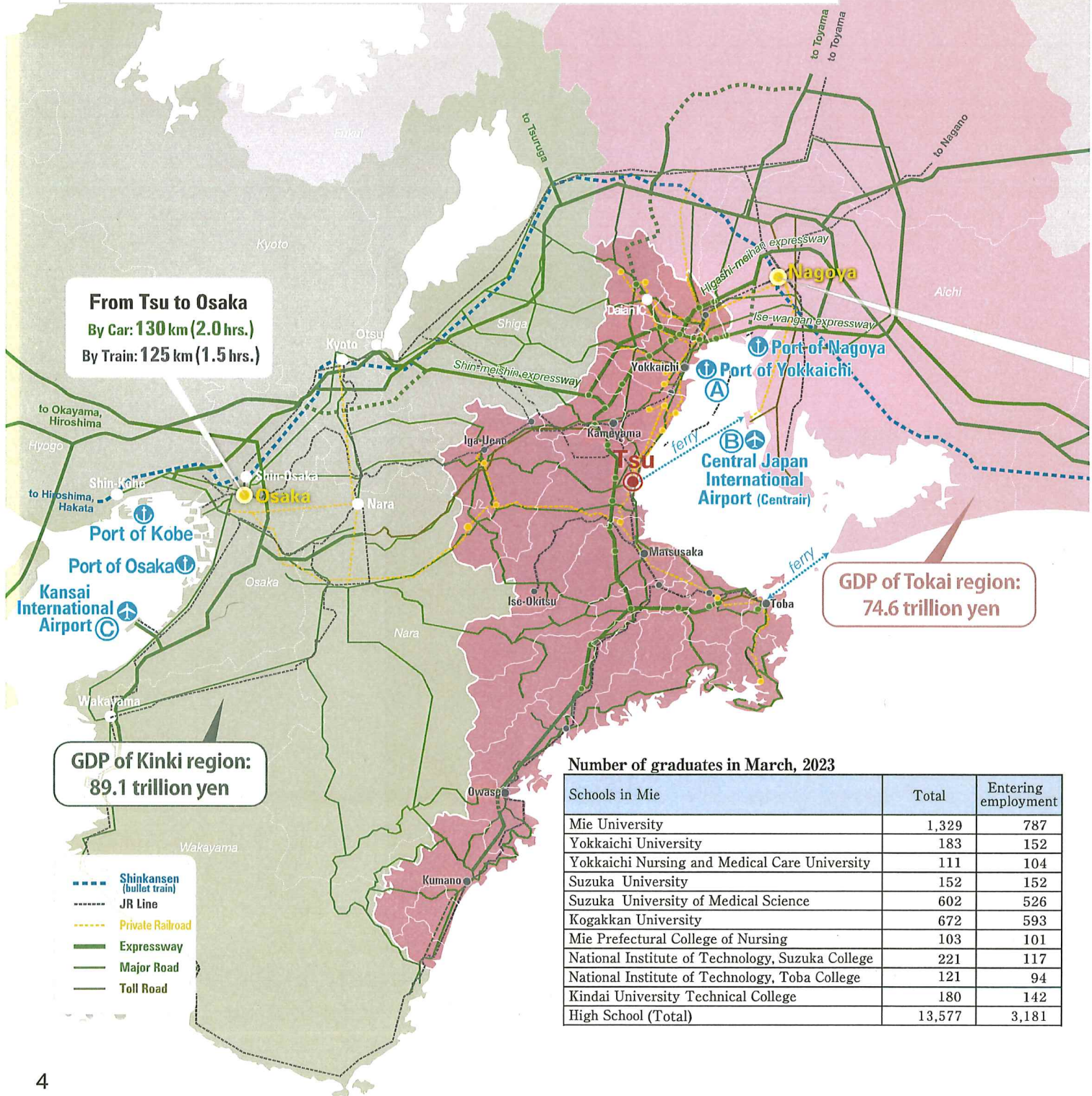
## Reason 4 Accessibility

Location is key to the success of any business. Because of its excellent road network, Mie has easy access to metropolises such as Nagoya, Tokyo and Osaka. Two international airports and Yokkaichi port connect Mie to the world. Mie is the perfect place for firms to seek business opportunities.



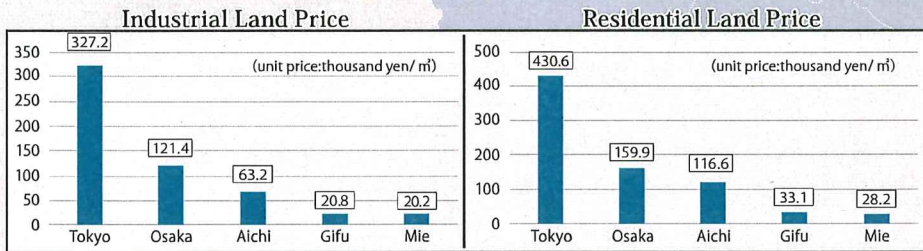
### Linear Chuo Shinkansen (Maglev bullet train)

By linking Shinagawa in Tokyo with Nagoya, Mie's nearby city, only in 40 minutes, Linear Chuo Shinkansen is scheduled to be operational by 2037. It is expected to be an ideal transportation that makes both high speed (500 km/h on average) and mass transit available, while reducing the amount of CO2 emissions. It will be one of the most important elements of the infrastructure that sustains the Japanese and Mie's economy.

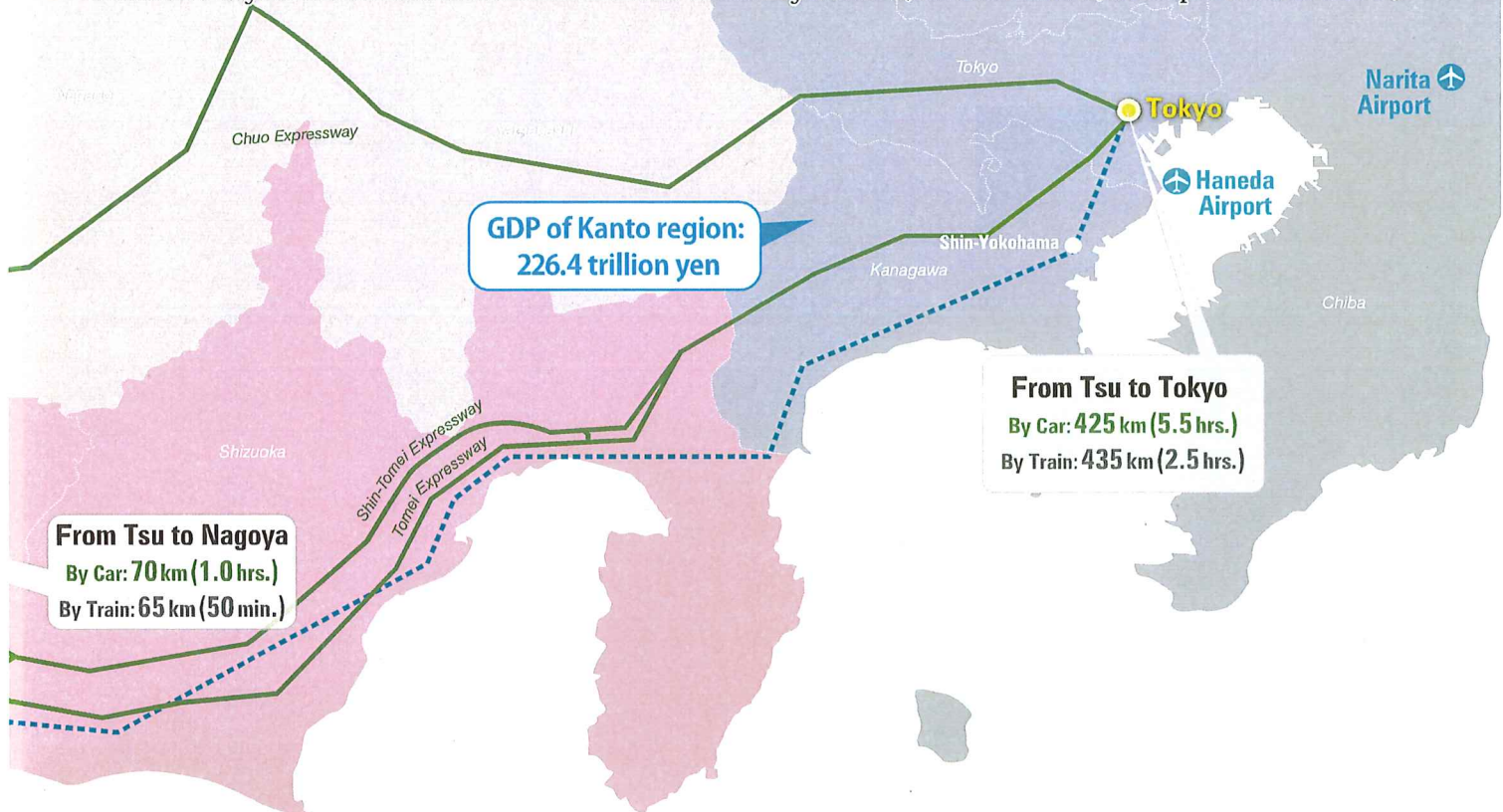


## Reason 5 Land Price

Affordable land prices ease the financial burden on international firms and minimize obstacles to expansion. Land in Mie is inexpensive compared to other prefectures in Japan.



Source: Analysis of Prefectural Land Price 2024 (Ministry of Land, Infrastructure, Transport and Tourism)



### Ⓐ Port of Yokkaichi

Located in Yokkaichi, a city with a population of more than 300,000 in northern Mie, Port of Yokkaichi has long acted as a hub for shipping and trade in central Japan. In 2023, 16,300 vessels made use of the port to ship more than 62 million gross tons of cargo, more than two thirds of it bound for international destinations. Dominant exports from Port of Yokkaichi include products such as finished cars, chemicals, and synthetic resin, while imports are dominated by crude oil and liquefied natural gas.



### Ⓑ Central Japan International Airport (Centrair)

One of five hub airports in Japan, Centrair in Aichi Prefecture, which opened in early 2005, is the main gateway linking central Japan to the world. The third most important international airport in Japan, Centrair served roughly 9 million travelers and moved more than 119,000 tons of international cargo in 2023. It is located on an artificial island in Ise Bay, 40km south of Nagoya. It takes about 45 minutes to get to Centrair from Mie.



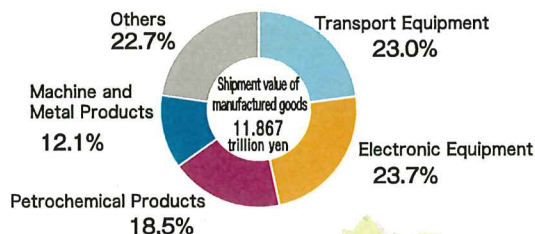
### Ⓒ Kansai International Airport

Opened in 1994, Kansai International Airport is located on an artificial island in Osaka Bay, 50km south of Osaka. The airport is a gateway for the Kansai area, the western part of Japan. In 2023, the number of passengers were about 6.9million for domestic flights and about 16.4million for international flights, and about 722,000 tons of international cargo.

# Leading Industries are gathered in Mie

Leading industries are gathered in Mie prefecture, which leads the “Era and the Next Generation” of our country.

Mie prefecture's shipment value of manufactured goods by industry.



Data: Search Statistics Surveys and Data 2023  
(Statistics Bureau of Japan)

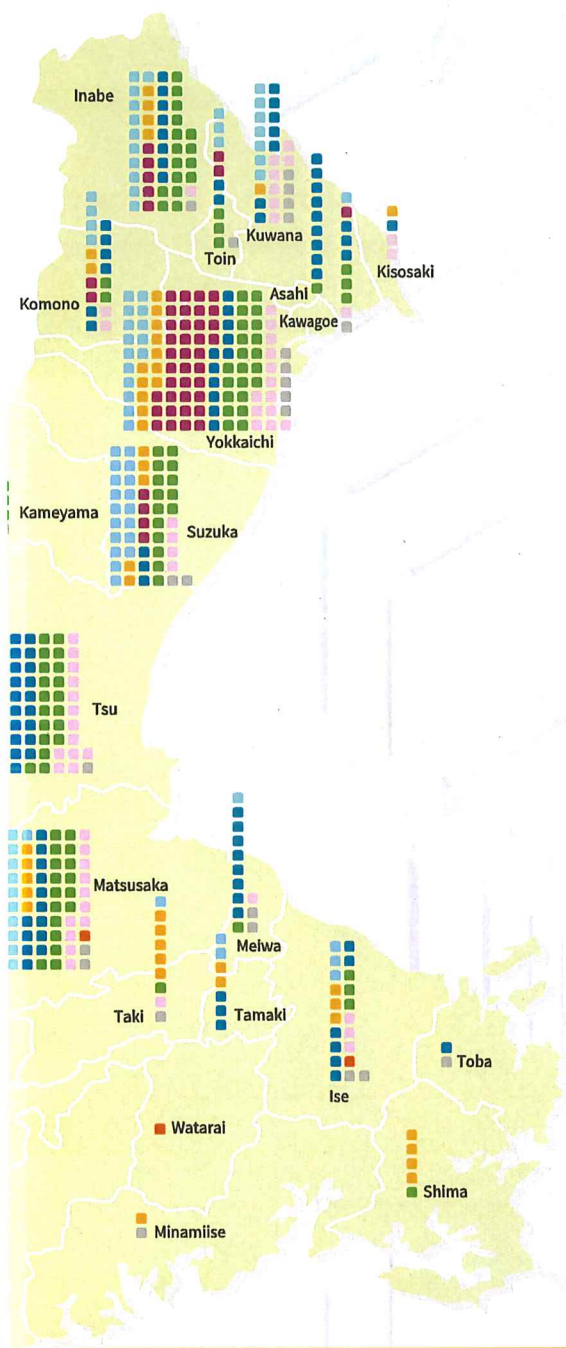
Company	Location
<b>Transport Equipment</b>	
Aichi Machine Industry Co., Ltd.	Tsu and Matsusaka
AVEX Co.Ltd.	Kuwana
EXEDY Corporation	Iga and Kameyama
F.C.C. Co.,Ltd.	Suzuka
Ohashi Giken,Inc.	Suzuka
Kumanoseiko Corporation.	Kumano
Kumi-Kasei Co., Ltd.	Kameyama
Gestamp Hotstamping Japan Co., Ltd.	Matsusaka
Aircraft Parts Manufacturing Cooperative (APMC)	Matsusaka
Kotobukiya Fronte Co., Ltd.	Suzuka
JTEKT Corporation.	Kameyama
Schlemmer Japan Co., Ltd.	Yokkaichi and Kawagoe
Sumitomo Wiring Systems, Ltd.	Yokkaichi, Suzuka, etc.
Sumitomo Riko Company Limited.	Matsusaka
Denso Corporation.	Inabe
Toyo Tire Corporation	Toin
Toyoda Gosei Co., Ltd.	Inabe
Toyota Auto Body Co.,Ltd.	Inabe
Toyota Industries Corporation.	Kameyama
Toyotomi Kiko Co., Ltd.	Inabe
Toyoseiki (Mie) Co., Ltd.	Tsu
BorgWarner Morse Systems Japan K.K.	Nabari and Iga
Honda Auto Body Co., Ltd.	Yokkaichi
Honda Motor Co., Ltd.	Suzuka
Muro Corporation.	Komono
Morioku Technology Company, Ltd.	Suzuka
Yasunaga Corporation.	Iga and Nabari
Yachiyo Industry Co., Ltd.	Suzuka and Kameyama
Yutaka Giken Company Limited.	Tsu
The Yokohama Rubber Co., Ltd.	Ise
<b>Electronic Equipment</b>	
Ise Murata Manufacturing Co., Ltd.	Tsu
Entegris Japan Co., Ltd.	Tsu
Western Digital GK	Yokkaichi
KIOXIA Corporation.	Yokkaichi
Kyocera Document Solutions Japan Inc.	Tamaki and Yokkaichi
Kurabo Industries Ltd.	Tsu
Sharp Display Technology Corporation	Kameyama and Taki
SINFONIA Technology Co., Ltd.	Ise and Toba
Daihen Corporation.	Taki
Toppa Electronics Products Co.,Ltd.	Kameyama
Nitto Denko Corporation.	Kameyama
Nipron Co.,Ltd.	Taki
Noritake Itron Corp.	Ise and Taiki
Noritake Co., Ltd.	Matsusaka
Panasonic Corporation	Tsu, etc.
Power Supply Technology Co., Ltd.	Matsusaka
Fuji Electric Co., Ltd.	Yokkaichi and Suzuka
United Semiconductor Japan Co., Ltd.	Kuwana
<b>Petrochemical Products</b>	
Asahi Kasei Corporation.	Suzuka
ADEKA Corporation	Toin
Ishihara Sangyo Kaisha, Ltd.	Yokkaichi
Emulsion Technology Co., Ltd.	Yokkaichi
ENEOS Materials Corporation	Yokkaichi
Kanto Chemical Co.,Inc.	Tsu
Kimoto Co., Ltd.	Inabe
KH Neochem Co., Ltd.	Yokkaichi
Cosmo Oil Co.,Ltd.	Yokkaichi
Sunrex Industry Co.,Ltd.	Yokkaichi
JSR Corporation.	Yokkaichi
JSP Corporation	Yokkaichi
Showa Yokkaichi Sekiyu Co.,Ltd.	Yokkaichi
DKS Co. Ltd.	Yokkaichi
Tama Chemicals Co., Ltd.	Yokkaichi
DIC Corporation	Yokkaichi
Tosoh Corporation	Yokkaichi
BASF Japan Ltd.	Yokkaichi
Fujimori Kogyo Co., Ltd.	Nabari
Mitsubishi Gas Chemical Company, Inc.	Yokkaichi
Mitsubishi Chemical Corporation.	Yokkaichi
Milbon Co., Ltd.	Iga
Meisei Chemical Works, Ltd.	Tsu
Yokkaichi Chemical Company Limited	Yokkaichi
Fujifilm Wako Pure Chemical Corporation	Komono

## Industry map by cities and towns



(Made by Industrial Investment Promotion Division)

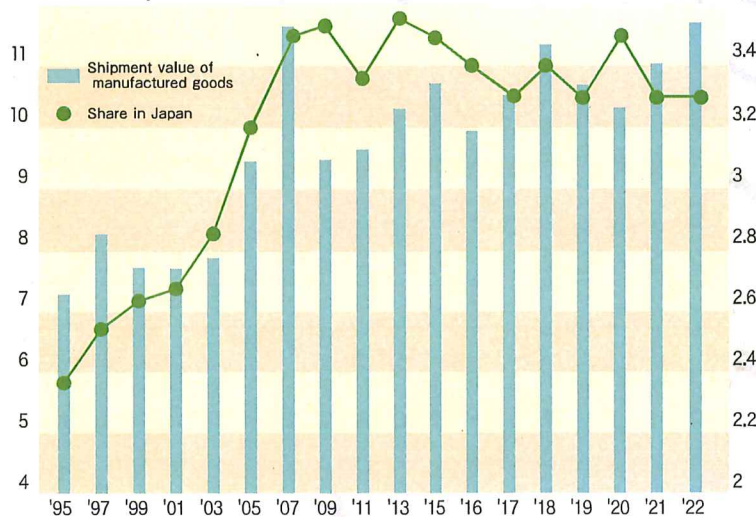




## Mie prefecture's shipment value of manufactured goods and share ratio in Japan

Unit: trillion yen

Unit: %



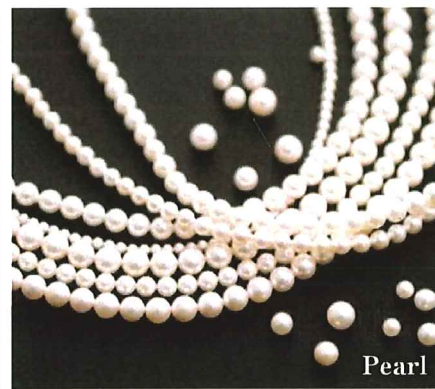
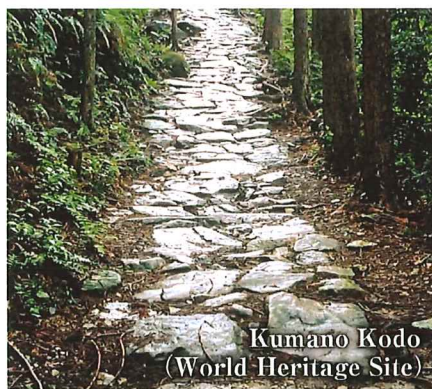
Data: Search Statistics Surveys and Data 2023 (Statistics Bureau of Japan)

Mie ranks 9th in Japan in shipment value of manufactured goods (2022)

Machine and Metal Products	Company	Location
	NTN Corporation	Kuwana, etc.
	NTN Advanced Materials Corporation	Kameyama
	Kaneso Co., Ltd.	Asahi
	Kikukawa Enterprise, Inc.	Ise
	JFE Engineering Corporation	Tsu
	CKD Corporation	Yokkaichi
	DIJET Industrial Co., Ltd.	Iga
	Takakita Co., Ltd.	Nabari
	THK Co., Ltd.	Matsusaka
	DMG Mori Co., Ltd.	Iga
	Nakanishi Metal Works Co., Ltd.	Nabari, etc.
	Nabtesco Corporation.	Tsu
	Fuji Springs Corporation Inc.	Kameyama
	Fujifilm Manufacturing Co., Ltd.	Suzuka
	MIE Techno Co., Ltd.	Kuwana
	Mitsubishi Kakoki Kaisha, Ltd.	Yokkaichi
	Miwa Lock Co., Ltd.	Tamaki and Ise
	Murata Machinery, Ltd.	Ise
	Morita Toyo	Iga
	Yamazaki Mazak Corporation.	Inabe, etc.
	LIXIL Corporation.	Tsu, Iga, etc.
	Kurogane Kosakusho Ltd.	Tsu
	Kobe Steel, Ltd.	Inabe
	High-Purity Silicon Corporation	Yokkaichi and Suzuka
	Shikibo Ltd	Suzuka
	SWCC Showa Cable Systems Co., Ltd.	Inabe
	Central Glass Products Co., Ltd.	Matsusaka
	Sogokagu Co., Ltd.	Iga
	Daiki Aluminium Industry Co., Ltd.	Kameyama
	Taiheiyo Cement Corporation	Inabe
	Daiwa House Industry Co., Ltd.	Komono
	Chiyoda Ute Co., Ltd.	Kawagoe
	Tsuda Electric Wire & Cable Co., Ltd.	Iga
	Toppan Inc.	Matsusaka
	Nisshin Co., Ltd.	Taki
	Nippon Sheet Glass Co., Ltd.	Yokkaichi and Tsu
	NGK Spark Plug Co., Ltd.	Ise
	Vale Japan Ltd.	Matsusaka
	Kuwana Metals, Ltd.	Kuwana
	Fujikura Ltd.	Suzuka
	Fuji Seal International, Inc.	Nabari
	Furukawa Electric Co., Ltd.	Kameyama
	Promat Japan Corp.	Tsu
	Hokuetsu Corporation	Kiho
	Ajinomoto Co., Inc.	Yokkaichi
	Imuraya Group Co., Ltd.	Tsu
	AGF Suzuka, Inc.	Suzuka
	Ace Pack Co., Ltd.	Tsu
	Omron Healthcare Co., Ltd.	Matsusaka
	The Oyatsu Company, Ltd.	Tsu
	Owasebussan Co., Ltd.	Owase
	Kenei Pharmaceutical Co., Ltd.	Matsusaka
	Kohkin Chemical Co., Ltd.	Tsu
	Sumitomo Pharma Co., Ltd.	Suzuka
	Taiyo Kagaku Co., Ltd.	Yokkaichi
	Takara Shuzo Co., Ltd.	Yokkaichi
	Chugai Iyaku Seisan Co., Ltd.	Iga
	Nipro Pharma Corporation	Matsusaka
	Nipponham Processed Foods Ltd.	Kisosaki
	Nutri Co., Ltd.	Yokkaichi
	Nozaki Seika	Kuwana
	Nobel Confectionery Co., Ltd.	Nabari
	Hagoromo Foods Corporation	Kisosaki
	Hamaotome Corporation.	Toin
	Bankyo Pharmaceutical Co., Ltd.	Taki and Tamaki
	Prima Meat Packers, Ltd.	Iga
	Premium Kitchen	Kuwana
	Hokuto Corporation.	Taki
	The Marine Foods Corporation	Tsu
	Marukyo Shokusan Co., Ltd.	Suzuka
	Yamamori Inc.	Kuwana and Matsusaka
	ROHTO Pharmaceutical Co., Ltd.	Iga
	Cosmos Corporation	Matsusaka, Watarai, etc.
	UL Japan, Inc.	Ise

\* Listed companies are companies with factory or office in Mie prefecture.

\* Listed companies are as of September 2024



# Mie Prefectural Government

Foreign Direct Investment Mie

Search

## Industrial Investment

### Promotion Office

13 Komei-cho, Tsu City,

Mie 514-8570

Phone: + 81-59-224-2668

## Tokyo Office of Mie Prefecture

11F Todofuken-kaikan

2-6-3 Hirakawa-cho,

Chiyoda-ku, Tokyo 102-0093

Phone: + 81-3-5212-9065

## Kansai Office

8F Osaka Ekimae No.4

Building 1-11-4

Umeda, Kita-ku, Osaka 530-0001

Phone: + 81-6-6442-3474