

Mie Prefecture Suggested Itinerary for Corporate Meetings



No.1
Hokusei area

Schedule				
day	time	itinerary	place	remarks
Day 1	10:00	Nagoya area		
	11:00~12:00	①【Sightseeing】Rokkaen	Kuwana	A historic building with a blend of Japanese and Western styles
	12:15~13:45	②【Lunch】THE FUNATSUYA	Kuwana	A restaurant on the former site of Otsuka Honjin in Kuwana-juku on the Tokaido
	14:30~17:30	③【Conference】Miyako Hotel Yokkaichi/Yokkaichi Cultural Hall	Yokkaichi	
	18:00~20:00	③【Dinner and Accommodation】Miyako Hotel Yokkaichi	Yokkaichi	
Day 2	9:00	Departure from hotel		
	9:45~11:30	④【Sightseeing】Mt. Gozaisho	Komono	Spectacular views throughout the seasons
	12:00~13:30	⑤【Lunch】Yunoyama Onsen/Aqua Ignis	Komono	-Yunoyama Onsen: A historic hot spring at the foot of Mount Gozaisho -Aqua Ignis: A comprehensive resort facility offering food and relaxation
	14:15~16:00	⑥【Shopping】Jazz Dream Nagashima	Kuwana	The largest outlet mall in the Tokai region
	17:00	Nagoya area		

▶Please refer to each website for details

【Facility Information】

- Rokkaen** [Opening Hours]9:00 AM - 5:00 PM, closed on Mondays
 [Admission Fee] Adults (high school students and above): ¥460
 Middle school students: ¥150
 Elementary school students and younger: Free
 [Parking] Available for both passenger cars and large vehicles
- THE FUNATSUYA** [Opening hours, holidays] 11:00 AM - 9:00 PM, irregular holidays
 [Parking] Passenger cars available, large vehicles require consultation
- Gozaisho Ropeway** [Opening Hours] Varies by season
 [Fare (Round Trip)] Adults (middle school students and older): ¥2,600
 Children (ages 4 and older, elementary school students and younger): ¥1,300
 [Parking] Available for both passenger cars and oversized vehicles
- Aqua Ignis** [Opening Hours/Closing Days] Varies by store
 [Admission Fee] Free, but additional fees apply for experiences and bathing
 [Parking] Available for both passenger cars and large vehicles
- Jazz Dream Nagashima** [Opening hours and holidays] Varies by store
 [Parking] Available for both passenger cars and large vehicles



▲ Gozaisho Ropeway



▲ Nabana no Sato



▲ Rokkaen



Mie Prefecture Suggested Itinerary for Corporate Meetings



No.2
Hokusei/Iga area

Schedule				
day	time	itinerary	place	remarks
Day 1	10:00	Nagoya area		
	11:00~11:45	①[Sightseeing] Yokkaichi Port Building "Umiterasu"	Yokkaichi	View of the Yokkaichi Industrial Complex from the observation deck
	12:00~13:30	②[Lunch] Denshichitei	Yokkaichi	A building registered as a national tangible cultural property
	14:30~17:30	③[Conference] Suzuka Circuit Hotel	Suzuka	
	18:00~20:00	③[Dinner] Suzuka Circuit Hospitality Lounge	Suzuka	The holy land of motorsports where the F1 Japanese Grand Prix is held
	20:30~	③[Accommodation] Suzuka Circuit Hotel	Suzuka	
Day 2	9:00	Departure from hotel		
	9:45~11:15	④[Sightseeing] Sekijuku	Kameyama	A former post town on the Tokaido road and an Important Preservation District for Groups of Traditional Buildings
	12:00~13:30	⑤[Lunch] Japanese cuisine Isenoya	Iga	A long-established store with over 120 years of history
	13:45~15:30	⑥[Sightseeing] Iga Ueno •Ninja Museum of Igaryu •Iga Ueno Castle •Iga Kumihimo Kumi no Sato	Iga	•Ninja Museum of Igaryu: Tours of ninja houses and ninja shows, etc. •Iga Ueno Castle: One of the tallest stone walls in Japan •Iga Kumihimo: A traditional Iga craft with over 1,000 years of history
	17:00	Osaka area/Nagoya area		

※Please refer to each website for details

- Umiterasu** [Opening Hours/Closing Days] 10:00 AM - 5:00 PM (until 9:00 PM on Saturdays, Sundays, and holidays)
Closed Wednesdays and during the New Year holidays
[Admission Fee] Adults: ¥310
Junior high school students and younger: Free
[Parking] Available for both passenger cars and large vehicles
- Denshichitei** [Opening Hours] 11:30 AM - 2:00 PM, 5:00 PM - 9:00 PM
Closed on Mondays (Reservations required for evening meals)
[Parking] Passenger cars available; large vehicles require consultation.
- Suzuka Circuit** Opening hours and fees vary depending on the plan. Please check the website for details.
- Sekijuku** [Parking] Available for both passenger cars and large vehicles (Roadside Station Sekijuku)
- Japanese Cuisine Isenoya** [Opening Hours] 11:00 AM - 2:00 PM, 5:00 PM - 10:00 PM (Reservations required for dinner)
[Closed] Irregularly
[Parking] Available for both passenger and oversized vehicles
- Ninja Museum of Igaryu** [Opening Hours] Weekdays: 10:00 AM - 4:00 PM
Saturdays, Sundays, and Holidays: 10:00 AM - 4:30 PM
[Closed] December 29th - January 1st
[Admission Fee] Adults (High School Students and Up): ¥1,000
Children (Ages 4 - Middle School): ¥700
※Ninja Show: ¥600 (Same Price for Adults and Children)
[Parking] Available for both passenger cars and oversized vehicles (Ueno Park Municipal Parking Lot)
- Iga Ueno Castle** [Opening Hours] 9:00 AM - 5:00 PM, closed December 29th - 31st
[Admission Fee] Adults (high school students and above): ¥600
Children (elementary and junior high school students): ¥300
[Parking] Available for both passenger cars and oversized vehicles (Ueno Park Municipal Parking Lot)
- Iga Kumihimo Kumi no Sato** [Opening Hours] 9:00 AM - 5:00 PM; Closed Mondays and December 29th - January 3rd
[Admission Fee] Free
※Kumihimo experience: ¥1,500 (Reservations required for group activities)
[Parking] Passenger cars available; large vehicles require consultation



▲ Suzuka Circuit



▲ Iga Ninja



▲ Yokkaichi Industrial Complex



▲ Denshichitei

Source: Mie Photo Gallery, Mie Prefecture Tourism Federation, Mie Prefecture

Mie Prefecture Suggested Itinerary for Corporate Meetings



No. 3
Central and Southern Ise-Shima area

Schedule				
day	time	itinerary	place	remarks
Day 1	10:00~10:45	Nagoya Station → Tsu Station [Transport] Kintetsu Limited Express "Hinotori"		
	11:00~12:00	①[Sightseeing] National Treasure Takada Honzan Senshu-ji Temple	Tsu	The head temple of the Takada branch of Shinshu Buddhism, which has over 600 temples nationwide
	12:30~14:00	②[Lunch] Shintamatei	Tsu	Tsu's famous eel
	14:30~17:30	③[Conference] •Hotel Tsu Center Palace •Hotel Green Park Tsu •Mie Prefectural Cultural Center	Tsu	
	18:00~20:00	③[Dinner and accommodation] •Hotel Tsu Center Palace •Hotel Green Park Tsu	Tsu	
Day 2	9:00	Departure from hotel		
	10:30~11:30	④[Sightseeing] Ise Grand Shrine(Naiku Shrine)	Ise	A shrine dedicated to Amaterasu Omikami
	11:30~14:00	④[Lunch and Shopping] Oharaimachi and Okage Yokocho	Ise	•Oharaimachi: The approach to the Naiku Shrine entrance •Okage Yokocho: A place to find Ise-Shima specialties and souvenirs
	14:30~15:30	⑤[Sightseeing] Futami Okitama Shrine and Meoto Iwa Rocks	Ise	There is a saying that "Pilgrimage to Ise starts from Futami," and this is a place of purification rituals that has a deep connection to Ise Grand Shrine.
	18:00	Osaka area/Nagoya area		

•Hinotori [Fares]Fare: ¥1,210 + Express fare: ¥920 + Hinotori special car fare: ¥100

•Takada Honzan Senshuji Temple [Opening Hours]6:00 AM - 5:00 PM [Goji-do Hall and Nyorai-do Hall]6:00 AM - 3:30 PM [Admission Fee]Free (Treasure Museum admission is subject to a separate fee) [Parking]Available for both passenger and oversized vehicles

•Shintamatei [Opening Hours] Weekdays: 11:00 AM - 2:30 PM, 4:00 PM - 8:30 PM Saturdays, Sundays, and Holidays: 11:00 AM - 8:30 PM [Closed] Mondays and the first and third Tuesdays of each month [Parking] Passenger cars available; large vehicles require consultation

※Please refer to each website for details

•Ise Grand Shrine (Naiku Shrine) [Opening Hours]5:00 AM - Closing times vary by month [Parking]Available for both passenger cars and large vehicles

•Oharaimachi/ Okage Yokocho [Opening Hours]9:00 AM - 5:00 PM (May vary depending on the season and store) [Parking]Available for both passenger and oversized vehicles (Ise Jingu Parking Lot)

•Futami Okitama Shrine [Opening Hours]7:00 AM - 4:15 PM (Shishosho) [Admission Fee]Free [Parking]Available for both passenger and large vehicles



Mie Prefecture Suggested Itinerary for Corporate Meetings



No. 4
Ise-Shima area

Schedule					
day	time	itinerary	place	remarks	
Day 1	10:10~11:40	Nagoya Station → Isuzugawa Station (Ise) [Transport] Kintetsu Limited Express			
	12:00~13:30	①[Lunch] Oharaimachi, Okage Yokocho	Ise	·Oharaimachi: The approach to the Naiku Shrine entrance ·Okage Yokocho: A place to find Ise-Shima specialties and souvenirs	
	13:30~14:30	①[Sightseeing] Ise Grand Shrine (Naiku Shrine)	Ise	A shrine dedicated to Amaterasu Omikami	
	15:00~20:00	②[Meeting, Dinner and Accommodation] ·Toba Hotel International ·Todaya ·Toba Seaside Hotel and others	Toba		
Day 2	9:00	Departure from hotel			
	9:15~11:00	③[Sightseeing] Mikimoto Pearl Island/Toba Aquarium ~Pearl Road~	Toba	·Mikimoto Pearl Island: A theme park in the birthplace of pearl farming ·Toba Aquarium: The aquarium with the largest number of species in Japan A panoramic view of the Ise-Shima Sea from the train window	
	11:45~13:45	④[Lunch] Ama hut Hachiman Kamado	Toba	Experience the culture of female divers and enjoy a seafood lunch	
	14:30~15:30	⑤[Sightseeing] Kashikojima Espana Cruise	Shima	Cruise Ago Bay on a luxurious pleasure boat	
	(1)	17:30/18:00	Arrival/Departure from Tsu Nagisamachi		
			[Transport] Tsu Airport Line	Tsu	
	(2)	18:45	Arrival at Chubu Centrair International Airport		
		15:45	Arriving at Kashikojima Station		
		16:03~18:42	Kashikojima Station → Osaka Namba Station [Transport] Kintetsu Limited Express		
		16:30~18:37	Kashikojima Station → Nagoya Station [Transport] Kintetsu Limited Express		

[Facility Information]
*Please refer to each website for details

·Okage Yokocho

[Opening Hours]9:00 AM - 5:00 PM (May vary depending on the season and store)
[Parking]Available for both passenger and oversized vehicles (Ise Jingu Parking Lot)

·Ama hut Hachiman Kamado

[Operating Hours]10:00 AM - 5:00 PM, irregular holidays.
*Reservations required.
[Parking]Available for both passenger cars and large vehicles.
[Other Information]Free shuttle service available from Toba Station (reservations required).

·Ise Grand Shrine(Naiku Shrine)

[Opening Hours]5:00 AM - Closing times vary by month.
[Parking]Available for both passenger cars and oversized vehicles.

·Kashikojima Espana Cruise

[Operating Hours]9:30 AM - 3:30 PM (departs every hour, except 12:30 PM)
[Closed Days]Open Daily
[Fee]

·Mikimoto Pearl Island

[Opening Hours]9:00 AM - 5:00 PM, Open Daily
[Admission Fee]
Adults: ¥1,650
Children (Elementary and Junior High School Students): ¥820
[Parking]Available for both passenger cars and oversized vehicles

·Tsu Airport Line

Adult: ¥1,900
Children (ages 4 through elementary school): ¥1,100
※Special Charter: ¥10,000

·Toba Aquarium

[Opening Hours/Closing Days] 9:30 AM - 5:00 PM, Open Daily
[Admission Fee]
Adults: ¥2,800
Children (Elementary and Junior High School Students): ¥1,600
Infants: ¥800
[Parking] Available for both passenger cars and large vehicles

[Parking]Available for both passenger and oversized vehicles



▲ Ise Shrine



▲ Mikimoto Pearl Farm

Kyoto

Nara

Osaka



▲ Ama hut Hachiman Kamado

Tsu

Nagisamachi

Nagoya Station

Chubu Centrair International Airport

Isuzugawa Station (Ise City)

1

2

3

4

5

Source: Mie Photo Gallery, Mie Prefecture Tourism Federation, Mie Prefecture

Mie Prefecture Suggested Itinerary for Corporate Meetings



No. 5
Central and Southern
Kyushu and East Kishu area

Schedule				
day	time	itinerary	place	remarks
Day 1	10:10~11:20	Nagoya Station → Matsusaka Station 【Transport】Kintetsu Limited Express		
	11:30~13:00	①【Lunch】Matsusaka Maruyoshi	Matsusaka	Enjoy the finest Matsusaka beef at a great price
	14:30~20:00	②【Meetings/Dinner】Hotel Tokinoza	Kihoku	The largest accommodation facility in the Higashi Kishu area
	20:00~	②【Accommodation】Hotel Tokinoza	Kihoku	
Day 2	8:30	Departure from hotel		
	9:00~12:00	③【Sightseeing】Kumano Kodo (Magose Pass)	Owase	A popular pass on the Kumano Kodo Iseji route. The scenery is truly representative of the Kumano Kodo.
	12:45~14:00	④【Lunch】Onigajo Center	Kumano	Group meals available
	14:00~15:00	⑤【Sightseeing】Onigajo Castle and Hananoiwaya Shrine Mandarin Orange Picking (Kanayama Pilot Farm)	Kumano	<ul style="list-style-type: none"> Onigajo: A natural fortress created by rough waves and tectonic movements Hananoiwaya Shrine: The tomb where Izanami-no-Mikoto rests Mandarin Orange picking: Nanki mikan, a Mie Prefecture specialty (around November)
	16:00	Katsuura Onsen (Wakayama) area		

※Please refer to each website for details

•Matsusaka Maruyoshi (Kamata Main Branch)

[Opening Hours/Closing Days] 11:00 AM - 9:30 PM (Restaurant), Closed Wednesdays
[Parking] Available for both passenger cars and oversized vehicles

•Magose Pass

[Estimated Time] Approximately 2 hours and 30 minutes
[Fee] Free
[Parking] Available for both passenger cars and large vehicles (Miyama Roadside Station)

•Onigajo Center (Group lunch venue)

[Opening Hours/Closing Days] 11:00 AM - 2:00 PM, Open Daily
*Reservation Required
[Parking] Available for both passenger cars and large vehicles

•Onigajo Castle

[Opening Hours] 24 hours
[Admission Fee] Free
[Parking] Available for both passenger and large vehicles (Onigajo Center Parking Lot)

•Hananoiwaya Shrine

[Opening Hours] Shrine office and gift shop: 9:00 AM - 4:00 PM
[Parking] Parking available for both passenger cars and large vehicles (Roadside Station Otsunachaya)

•Kanayama Pilot Farm (Mandarin Orange picking)

[Opening Hours/Closed Days] 9:30 AM - 4:00 PM, Open Daily
*Mikan picking is only available around November
[Fee]
Adults: ¥1,200
Elementary School Students: ¥800
Toddlers: ¥500
[Parking] Available for both passenger cars and large vehicles



▲ Onigajo Castle



▲ Matsusaka Maruyoshi's Matsusaka beef



▲ Kumano Kodo Matsumoto Pass



Source: Mie Photo Gallery, Mie Prefecture Tourism Federation, Mie Prefecture

Mie Prefecture Incentive Trip Model Itinerary



No.1
Hokusei area

Schedule				
day	time	itinerary	place	remarks
Day 1	10:00	Nagoya area		
	11:30~13:00	①【Lunch】 Okudo Nakamura	Inabe	Set meal using local ingredients
	13:30~16:30	②【Sightseeing and Experiences】 Inabe City Plum Grove Park/Agricultural Park	Inabe	Plum Grove Park is one of the largest plum blossom viewing spots in the Tokai region. The agricultural park also boasts one of the prefecture's largest park golf courses.
	17:30~19:30	③【Dinner】 Denshichitei	Yokkaichi	A building registered as a national tangible cultural property
	20:00~21:00	④【Sightseeing】 Yokkaichi Night View Cruise	Yokkaichi	Petrochemical complex factory night view
	21:15~	⑤【Accommodation】 Miyako Hotel Yokkaichi	Yokkaichi	
Day 2	9:00	Departure from hotel		
	9:45~11:00	⑥【Sightseeing】 Yokoyama Garden	Komono	A nationally designated, registered monument garden that is closed to the public
	11:30~13:00	⑦【Lunch】 Yunoyama Onsen/Aqua Ignis	Komono	·Yunoyama Onsen: A historic hot spring at the foot of Mount Gozaisho ·Aqua Ignis: A comprehensive resort facility offering dining and relaxation
	13:45~15:15	⑧【Experiences and Sightseeing】 Kameyama Candle Town	Kameyama	An experiential facility created by Kameyama Candle
	16:00~17:00	⑨【Shopping】 Jazz Dream Nagashima	Kuwana	The largest outlet mall in the Tokai region
	18:00	Nagoya area		

- Facility Information**
*Please refer to each website for details
- Okudo Nakamura**
 [Opening Hours] 11:00 AM - 3:00 PM (until 3:30 PM on Saturdays, Sundays, and holidays)
 Closed Wednesdays
 [Parking] Passenger cars available; large vehicles require consultation.
 - Inabe City Plum Grove Park**
 [Opening Hours] 9:00 AM - 4:00 PM
 [Admission Fee] (During the Plum Festival only)
 Adults (middle school students and older): ¥500
 Elementary school students and younger: Free
 [Parking] Available for both passenger cars and large vehicles.
 - Fujiwara Park Golf Course (Inabe City Agricultural Park)**
 [Opening Hours] 9:00 AM - 4:00 PM, closed Wednesdays and New Year's holidays
 [Prices] 18 holes
 Adults: ¥500
 Children: ¥300
 [Parking] Available for both passenger cars and oversized vehicles
 - Denshichitei**
 [Opening Hours/Closing Days] 11:30 AM - 2:00 PM, 5:00 PM - 9:00 PM
 Closed on Mondays ※Reservations required for evening parking
 [Parking] Passenger cars available; please inquire for oversized vehicles

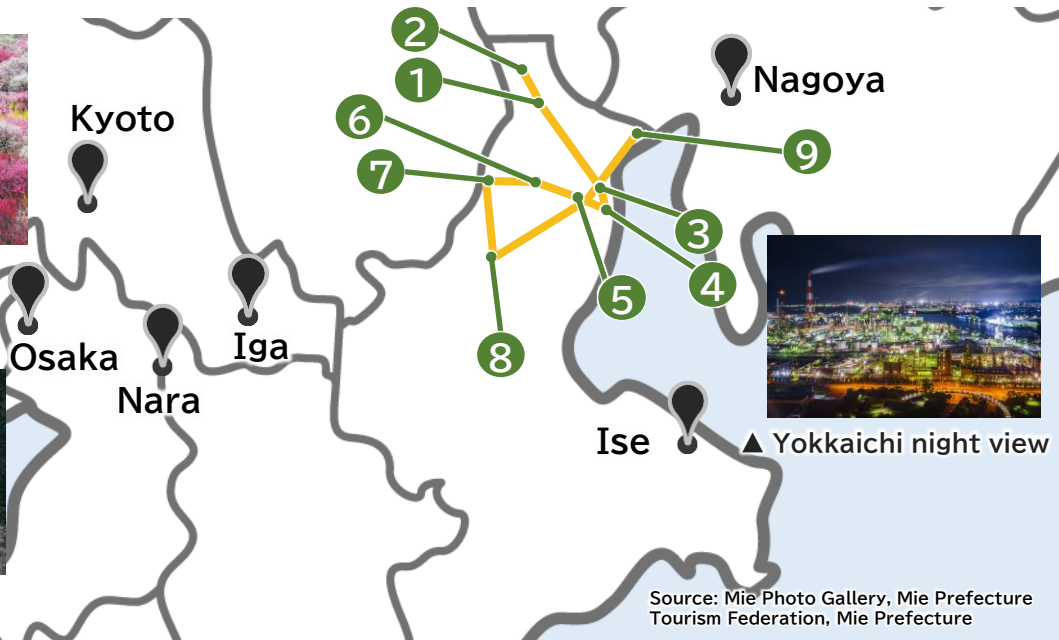
- Yokkaichi Night View Cruise (Private Cruise *Reservation Required)**
 [Departure Time] Sunset to 8:30 PM (Consultation required if scheduled departures overlap)
 [Fee] Weekdays and Saturdays: ¥110,000, Sundays and Holidays: ¥143,000
 [Capacity] 34 people
 [Parking] Available for both passenger and oversized vehicles
- Yokoyama Garden**
 Reservations required. For inquiries, please contact the Komono Tourism Association.
- Aqua Ignis**
 [Opening Hours/Closing Days] Varies by store
 [Admission Fee] Free, but additional fees apply for experiences and bathing
 [Parking] Available for both passenger cars and large vehicles
- Kameyama Candle Town**
 [Opening Hours/Closing Days] 10:00 AM - 5:00 PM (until 6:00 PM on Saturdays, Sundays, and holidays)
 Closed Mondays and New Year's holidays
 [Admission Fee] Free; activities cost extra
 [Parking] Available for both passenger and oversized vehicles
- Jazz Dream Nagashima**
 [Opening Hours/Closing Days] Varies by store
 [Parking] Available for both passenger cars and large vehicles



▲ Inabe Plum Grove



▲ Yunoyama Onsen



Nagoya

Kyoto

Osaka

Nara

Iga

Ise

▲ Yokkaichi night view

Source: Mie Photo Gallery, Mie Prefecture Tourism Federation, Mie Prefecture

Mie Prefecture Incentive Trip Model Itinerary



No.2
Hokusei/Iga area

Schedule				
day	time	itinerary	place	remarks
Day 1	10:00	Nagoya area		
	11:00~12:30	①【Lunch】Kuwana Chojiya	Kuwana	Kuwana specialty "grilled clams"
	13:30~15:30	②【Award Ceremony】 Suzuka Circuit Hotel	Suzuka	
	16:00~20:00	②【Sightseeing and Dinner】 Suzuka Circuit ・Pit building tour (30 min) ・International Racing Course Bus Tour (30 min) ・Dinner at the Hospitality Lounge	Suzuka	The holy land of motorsports where the F1 Japanese Grand Prix is held
	20:30~	②【Accommodation】 Suzuka Circuit Hotel	Suzuka	
Day 2	9:00	Departure from hotel		
	10:00~12:00	③【Experience】 Iga-yaki Traditional Industry Hall	Iga	Iga ware experience class
	12:30~14:00	④【Lunch】Kanaya Honten	Iga	Iga beef sukiyaki, etc.
	14:15~16:00	⑤【Sightseeing and Experience】 Iga Ueno ・Ninja Museum of Igaryu ・Iga Ueno Castle ・Iga Kumihimo Kumi no Sato	Iga	・Ninja Museum of Igaryu: Tour a ninja house, see a ninja show, and more. ・Iga Ueno Castle: One of Japan's tallest stone walls. ・Iga Kumihimo: A traditional Iga craft with over 1,000 years of history.
	17:30	Osaka area/Nagoya area		

※Please refer to each website for details

・Kuwana Chojiya

[Opening Hours/Closing Days] 11:00 AM - 2:00 PM, 5:00 PM - 9:30 PM
Closed Wednesdays and Thursdays
[Parking] Passenger cars available; large vehicles require consultation

・Suzuka Circuit

Opening hours and fees vary depending on the plan. Please check the website for details.

・Iga-yaki Pottery Experience (Iga-yaki Traditional Industry Center)

[Trial Registration] 9:00 AM - 3:00 PM, closed Mondays and New Year's holidays. *Reservations required.
[Duration] Approximately 1 to 1.5 hours.
[Parking] Available for both passenger cars and oversized vehicles.

・Ninja Museum of Igaryu

[Opening Hours] Weekdays: 10:00 AM - 4:00 PM Saturdays, Sundays, and Holidays: 10:00 AM - 4:30 PM
[Closed] December 29th - January 1st
[Admission Fee]
Adults (High School Students and Up): ¥1,000
Children (Ages 4 - Middle School): ¥700
※Ninja Show: ¥600 (Same Price for Adults and Children)
[Parking] Available for both passenger cars and oversized vehicles (Ueno Park Municipal Parking Lot)

・Iga Ueno Castle

[Opening Hours] 9:00 AM - 5:00 PM, closed December 29th - 31st
[Admission Fee]
Adults (high school students and above): ¥600
Children (elementary and junior high school students): ¥300
[Parking] Available for both passenger cars and oversized vehicles (Ueno Park Municipal Parking Lot)

・Iga Kumihimo Kumi no Sato

[Opening Hours] 9:00 AM - 5:00 PM; Closed Mondays and December 29th - January 3rd
[Admission Fee] Free
※Kumihimo experience: ¥1,500 (Reservations required for group activities)
[Parking] Passenger cars available; large vehicles require consultation



▲ Suzuka Circuit



▲ Iga Ninja

Kyoto

Osaka

Nara

Nagoya

Ise



▲ Iga Ueno Castle

Source: Mie Photo Gallery, Mie Prefecture Tourism Federation, Mie Prefecture

Mie Prefecture Incentive Trip Model Itinerary



No. 3
Central and Southern Ise-Shima area

Schedule				
day	time	itinerary	place	remarks
Day 1	10:10~11:20	Nagoya Station → Matsusaka Station [Transport] Kintetsu Limited Express		
	11:30~13:30	①[Lunch] Matsusaka beef Sukiyaki, etc.	Matsusaka	Wadakin, Ushigin, Maruyoshi, etc.
	13:45~15:15	①[Sightseeing] Gojoban Yashiki and Matsusaka Castle Ruins	Matsusaka	Take a stroll through the wealthy merchant town of Matsusaka. You can also request a volunteer guide.
	16:00~	②[Sightseeing, Dinner and Accommodation] VISON	Taki	A large commercial resort of food and wisdom
Day 2	9:00	Departure from hotel		
	9:45~11:15	③[Sightseeing] Ise Grand Shrine(Geku Shirine)	Ise	A shrine dedicated to Toyouke Omikami, the guardian deity of industry
	11:15~12:45	③[Lunch] Approach to Geku Shirine	Ise	
	13:00~15:30	④[Sightseeing] Ise Grand Shrine (Naiku Shrine), Oharaimachi, Okage Yokocho	Ise	<ul style="list-style-type: none"> ·Ise Grand Shrine: A shrine dedicated to Amaterasu Omikami ·Oharaimachi: The approach to the Naiku entrance ·Okage Yokocho: A place where you can find Ise-Shima specialties and souvenirs
	18:00	Osaka area/Nagoya area		Using Kintetsu Limited Express

- [Facility Information]**
*Please refer to each website for details
- Wadakin** [Opening Hours/Closing Days] Weekdays: 11:30 AM - 8:00 PM Saturdays, Sundays, and holidays: 11:00 AM - 8:00 PM Closed on the fourth Tuesday of every month, New Year's Day, and Obon [Parking] Available for both passenger cars and oversized vehicles
 - Gojoban Yashiki** [Opening Hours/Closing Days] 10:00 AM - 4:00 PM. Closed on Mondays and New Year's holidays. [Admission Fee] Free. [Parking] Available for both passenger and oversized vehicles (Matsusaka Municipal Parking Lot).
 - VISON** [Opening Hours/Closing Days] Varies by store [Parking] Available for both passenger cars and large vehicles

- Ise Grand Shrine (Geku Shrine)** [Opening hours] From 5:00 AM, closing times vary depending on the month [Parking] Available for both passenger cars and large vehicles
- Ise Grand Shrine (Naiku Shrine)** [Opening hours] From 5:00 AM, closing times vary depending on the month [Parking] Available for both passenger cars and large vehicles
- Okage Yokocho** [Opening Hours] 9:00 AM - 5:00 PM (May vary depending on the season and store) [Parking] Available for both passenger and oversized vehicles (Ise Jingu Parking Lot)



Source: Mie Photo Gallery, Mie Prefecture Tourism Federation, Mie Prefecture

Mie Prefecture Incentive Trip Model Itinerary



No. 4
Ise-Shima area

Schedule

day	time	itinerary	place	remarks
Day 1	10:25~12:27	Nagoya Station → Kashikojima Station 【Transport】 Kintetsu Limited Express "Shimakaze"		Popular tourist express train
	12:45~14:30	①【Lunch】 Shima Kanko Hotel	Shima	
	15:00~20:00	①【Award Ceremony, Dinner and Accommodation】 Shima Kanko Hotel	Shima	A classic hotel that also hosted the G7 Ise-Shima Summit
Day 2	9:00	Departure from hotel		
	9:40~11:00	②【Experience】 Pearl Workshop Shinju no Sato	Shima	Experience harvesting pearls, a specialty of Ise-Shima
	12:00~13:30	③【Lunch】 Ama hut Hachiman Kamado	Toba	Experience the culture of female divers and enjoy a seafood lunch
		~ Pearl Road ~	Toba	A panoramic view of the Ise-Shima Sea from the train window
	14:45~16:30	④【Sightseeing】 Ise Grand Shrine (Naiku Shrine), Oharaimachi, Okage Yokocho	Ise	<ul style="list-style-type: none"> • Ise Grand Shrine: A shrine dedicated to Amaterasu Omikami • Oharaimachi: The approach to the Naiku entrance • Okage Yokocho: A shopping street for Ise-Shima specialties and souvenirs
	16:50	Arriving at Ujiamada Station		
	(1) 17:14~18:37	Ujiamada Station → Nagoya Station 【Transport】 Kintetsu Limited Express		
	(2) 17:30~19:15	Ujiamada Station → Osaka-Uehonmachi Station 【Transport】 Kintetsu Limited Express		
17:30~19:41	Ujiamada Station → Kyoto Station 【Transport】 Kintetsu Limited Express		*Transfer at Yamato-Yagi Station	

•Shimakaze [Fares] (Private room fee not included)
Fare: ¥2,130 + Express: ¥1,900 + Shimakaze Special Car: ¥1,030
[Operating Days]
Nagoya: Closed on Thursdays
Osaka Namba: Closed on Tuesdays
Kyoto: Closed on Wednesdays

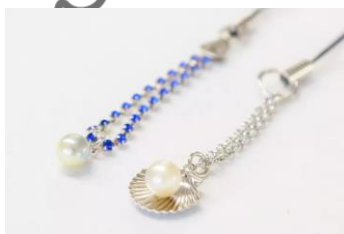
•Pearl Workshop Shinju no Sato [Opening Hours/Closing Days] 9:30 AM - 5:00 PM
Closed Tuesdays and New Year's holidays
[Experience Fee] ¥2,200~ (Pearl Harvesting Experience)
[Parking] Available for both passenger and oversized vehicles

•Ama hut Hachiman Kamado [Opening Hours] 10:00 AM - 5:00 PM (Irregular holidays)
*Reservations required
[Parking] Available for both passenger cars and oversized vehicles
[Other Information] Free shuttle service available from Toba Station (reservations required)

•Ise Grand Shrine (Naiku Shrine) [Opening Hours] 5:00 AM - Closing times vary by month.
[Parking] Available for both passenger cars and oversized vehicles.

•Okage Yokocho [Opening Hours] 9:00 AM - 5:00 PM (May vary depending on the season and store)
[Parking] Available for both passenger cars and oversized vehicles (Ise Jingu Parking Lot)

*Please refer to each website for details



▲ Pearl Workshop Shinju no Sato



▲ Shimakaze

Kyoto

Iga

Osaka

Nara

Nagoya Station



▲ Ise Shrine

Kashikojima Station (Shima City)

Mie Prefecture Incentive Trip Model Itinerary



No. 5

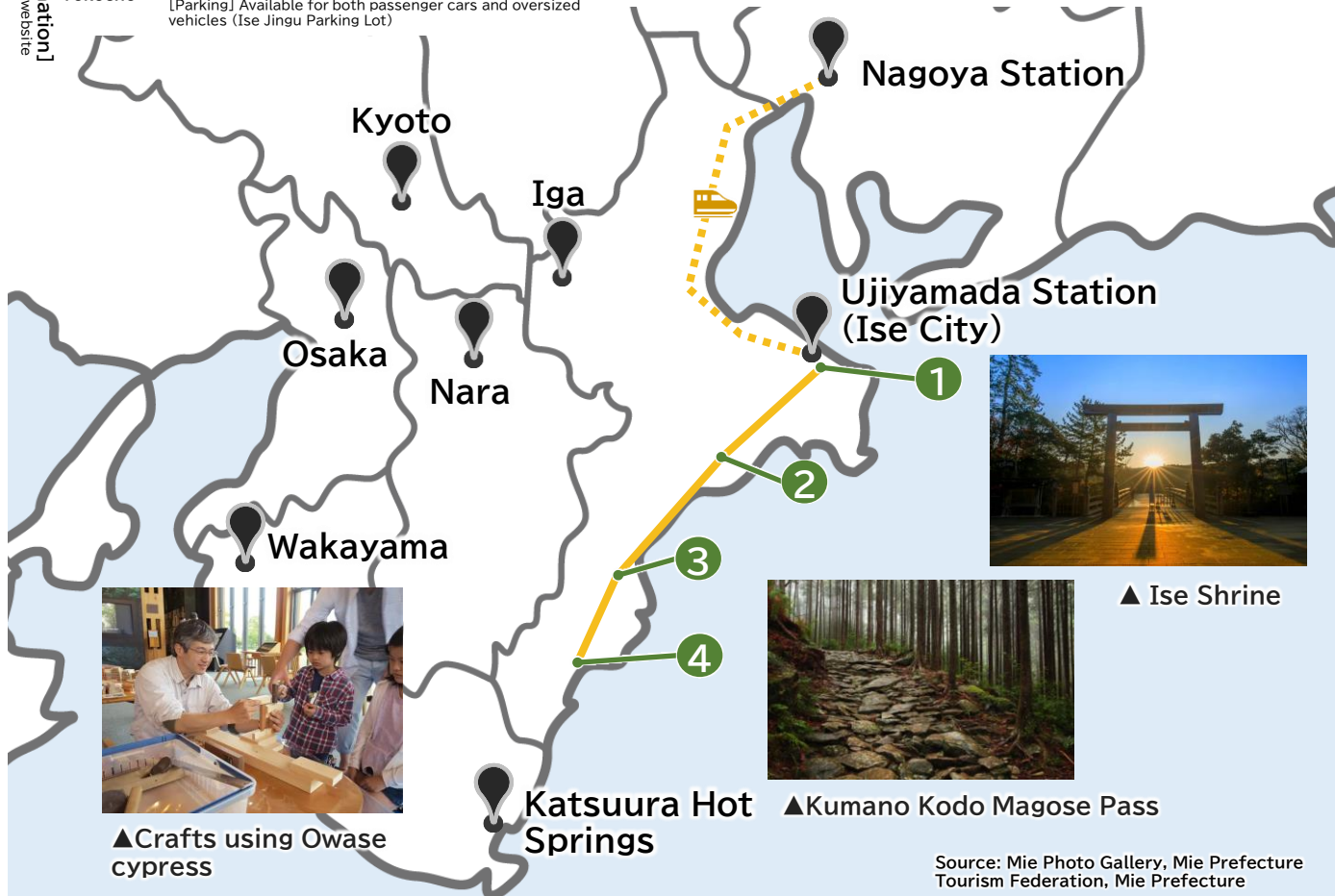
Central and Southern Kyushu and East Kishu area

Schedule				
day	time	itinerary	place	remarks
Day 1	10:25~11:42	Nagoya Station → Ujijamada Station 【Transport】 Kintetsu Limited Express "Shimakaze"		Popular tourist express train
	12:00~13:00	①【Lunch】 Okage Yokocho	Ise	A wide selection of Ise-Shima specialties and souvenirs
	13:00~14:45	①【Sightseeing】 Ise Grand Shrine (Naiku Shrine), Oharaimachi, Okage Yokocho	Ise	·Ise Grand Shrine: A shrine dedicated to Amaterasu Omikami ·Oharaimachi: The approach leading to the Naiku entrance
	16:00~20:00	②【Award Ceremony and Dinner】 Hotel Tokinoza	Kihoku	The largest accommodation facility in the Higashi Kishu area
	20:00~	②【Accommodation】 Hotel Tokinoza	Kihoku	
Day 2	9:00	Departure from hotel		
	9:45~11:00	③【Experience】 Crafts using Owase cypress	Owase	Crafts such as my own chopsticks and photo frames
	11:30~13:00	③【Lunch】 Owase Seaside View	Owase	Enjoy wild grouper dishes
	13:30~16:00	④【Sightseeing】 Kumano Kodo (Matsumoto Pass)	Kumano	A pass that is easy even for beginners to walk
	16:00	Katsuura Onsen (Wakayama) area		

Facility Information
*please refer to each website for details

- Shimakaze [Fares] (Private room fee not included)
Fare: ¥1,740 + Express: ¥1,340 + Shimakaze Special Car: ¥840
[Operating Days]
Nagoya: Closed on Thursdays
Osaka Namba: Closed on Tuesdays
Kyoto: Closed on Wednesdays
- Okage Yokocho [Opening Hours] 9:00 AM - 5:00 PM (May vary depending on the season and store)
[Parking] Available for both passenger cars and oversized vehicles (Ise Jingu Parking Lot)

- Ise Grand Shrine (Naiku Shrine) [Opening Hours] From 5:00 AM, closing times vary depending on the month
[Parking] Available for both passenger cars and large vehicles
- Owase Seaside View [Opening Hours] 11:00-15:00, irregular holidays *Advance reservations recommended
[Parking] Passenger cars and large vehicles accepted (please contact us for large vehicles)
- Matsumoto Pass [Parking] Onigajo Center and others



▲ Ise Shrine

▲ Kumano Kodo Magose Pass

▲ Crafts using Owase cypress